



THE SOUTH AUSTRALIAN GOVERNMENT GAZETTE

PUBLISHED BY AUTHORITY

ADELAIDE, THURSDAY, 22 OCTOBER 2020

CONTENTS

GOVERNOR'S INSTRUMENTS	
Acts—No. 35-38 of 2020.....	4874
Appointments.....	4874
Regulations—	
Controlled Substances (Poisons) (Real Time Prescription Monitoring) Variation Regulations 2020— No. 287 of 2020.....	4875
STATE GOVERNMENT INSTRUMENTS	
Casino Act 1997.....	4880
Environment Protection Act 1993.....	4885
Fisheries Management Act 2007.....	4893
Fisheries Management (Prawn Fisheries) Regulations 2017.....	4895
Geographical Names Act 1991.....	4897
Landscape South Australia Act 2019.....	4898
Livestock Act 1997.....	4898
Livestock Regulations 2013.....	4898
Major Events Act 2013— [REPUBLISHED].....	4898
Mining Act 1971.....	4902
Real Property Act 1886.....	4909
Roads (Opening and Closing) Act 1991.....	4914
Transplantation and Anatomy Act 1983.....	4915
LOCAL GOVERNMENT INSTRUMENTS	
City of Mitcham.....	4918
City of Port Adelaide Enfield.....	4918
Alexandrina Council.....	4918
Light Regional Council.....	4918
District Council of Robe.....	4919
PUBLIC NOTICES	
Trustee Act 1936.....	4920
National Energy Retail Law.....	4920
National Gas Law.....	4920

All instruments appearing in this gazette are to be considered official, and obeyed as such

GOVERNOR'S INSTRUMENTS

ACTS

Department of the Premier and Cabinet
Adelaide, 22 October 2020

His Excellency the Governor directs it to be notified for general information that he has in the name and on behalf of Her Majesty The Queen, this day assented to the undermentioned Acts passed by the Legislative Council and House of Assembly in Parliament assembled, viz.:

No. 35 of 2020—Statutes Amendment (Sentencing) Act 2020

An Act to amend the Criminal Procedure Act 1921 and the Sentencing Act 2017

No. 36 of 2020—Equal Opportunity (Parliament and Courts) Amendment Act 2020

An Act to amend the Equal Opportunity Act 1984

No. 37 of 2020—Statutes Amendment (National Energy Laws) (Penalties and Enforcement) Act 2020

An Act to amend the National Electricity (South Australia) Act 1996, the National Energy Retail Law (South Australia) Act 2011 and the National Gas (South Australia) Act 2008

No. 38 of 2020—Teachers Registration and Standards (Miscellaneous) Amendment Act 2020

An Act to amend the Teachers Registration and Standards Act 2004

By command,

STEVEN SPENCE MARSHALL
Premier

APPOINTMENTS

Department of the Premier and Cabinet
Adelaide, 22 October 2020

His Excellency the Governor in Executive Council has been pleased to appoint the undermentioned to the State Opera of South Australia Board, pursuant to the provisions of the State Opera of South Australia Act 1976:

Member: from 23 October 2020 until 22 October 2023

Elizabeth Christina Olsson

By command,

STEVEN SPENCE MARSHALL
Premier

DPC20/048CS

Department of the Premier and Cabinet
Adelaide, 22 October 2020

His Excellency the Governor in Executive Council has been pleased to appoint Edwina Cecily Cornish as a Commissioner of the South Australian Productivity Commission for a term commencing on 31 October 2020 and expiring on 29 January 2021 - pursuant to section 68 of the Constitution Act 1934.

By command,

STEVEN SPENCE MARSHALL
Premier

DPC20/086CS

Department of the Premier and Cabinet
Adelaide, 22 October 2020

His Excellency the Governor in Executive Council has been pleased to appoint Adrian Tembel as a Commissioner of the South Australian Productivity Commission for a term of two years commencing on 26 November 2020 and expiring on 25 November 2022 - pursuant to section 68 of the Constitution Act 1934.

By command,

STEVEN SPENCE MARSHALL
Premier

DPC20/086CS

REGULATIONS

South Australia

Controlled Substances (Poisons) (Real Time Prescription Monitoring) Variation Regulations 2020

under the *Controlled Substances Act 1984*

Contents

Part 1—Preliminary

- 1 Short title
- 2 Commencement
- 3 Variation provisions

Part 2—Variation of *Controlled Substances (Poisons) Regulations 2011*

- 4 Variation of regulation 3—Interpretation
 - 5 Variation of regulation 33—How prescriptions are to be given
 - 6 Variation of regulation 34—Written prescriptions
 - 7 Variation of regulation 35—Dispensing prescriptions
 - 8 Variation of regulation 35A—Dispensing prescriptions for drugs of dependence and other monitored drugs—special provisions
 - 9 Variation of regulation 37—Special restrictions on prescription or supply of drugs of dependence by registered health practitioners and veterinary surgeons
 - 10 Insertion of regulation 53A
 - 53A Disclosure of confidential information contained in monitored drugs database (section 60A(1)(e) of Act)
-

Part 1—Preliminary

1—Short title

These regulations may be cited as the *Controlled Substances (Poisons) (Real Time Prescription Monitoring) Variation Regulations 2020*.

2—Commencement

These regulations come into operation on 1 November 2020.

3—Variation provisions

In these regulations, a provision under a heading referring to the variation of specified regulations varies the regulations so specified.

Part 2—Variation of *Controlled Substances (Poisons) Regulations 2011*

4—Variation of regulation 3—Interpretation

- (1) Regulation 3(1)—after the definition of *APVMA* insert:

Australian jurisdiction means the Commonwealth or a State or Territory of the Commonwealth;

- (2) Regulation 3(1)—after the definition of *council subsidiary* insert:

data source entity means any of the following:

- (a) eRx Script Exchange Pty Ltd;
- (b) MediSecure Pty Ltd;
- (c) Medication Knowledge Pty Ltd;
- (d) a prescription exchange service operating in an Australian jurisdiction;

- (3) Regulation 3(1), definition of *Metropolitan Adelaide*—delete the definition and substitute:

Metropolitan Adelaide means Metropolitan Adelaide as defined by the *Development Act 1993* immediately before 1 July 2019;

monitored drug means any of the following:

- (a) any S8 poison;
- (b) any S4 poison that is a benzodiazepine;
- (c) any S4 poison that contains Codeine;
- (d) any of the following S4 poisons:
 - (i) Gabapentin;
 - (ii) Pregabalin;
 - (iii) Quetiapine;
 - (iv) Tramadol;
 - (v) Zolpidem;
 - (vi) Zopiclone;

monitored drugs database means an electronic database kept by the Department that contains information relating to the sale, supply, prescription, administration and use of monitored drugs;

- (4) Regulation 3—after subregulation (3) insert:

- (4) For the purposes of these regulations—

- (a) an electronic prescription for a drug is *presented* when it is accessed electronically for the purpose of dispensing the drug; and
- (b) a prescription for a drug given to a pharmacist by fax is *presented* when a faxed copy of the prescription is transmitted to the pharmacy at which the drug is to be dispensed.

5—Variation of regulation 33—How prescriptions are to be given

Regulation 33(6)—delete subregulation (6) and substitute:

- (6) If a prescription for a monitored drug for human use is prepared in an approved electronic form, the prescriber must—
 - (a) keep a record of—
 - (i) the details required by subregulation (5) to be included in the prescription; and
 - (ii) the date of birth of the person for whom the prescription has been prepared; and
 - (b) transmit that record electronically to the Chief Executive so that it is received no later than the 7th day of the month following the month in which the drug was dispensed (or such later day as the Chief Executive may, on the application of the prescriber, authorise).

Maximum penalty: \$5 000.

Expiation fee: \$1 250.

- (6a) A prescriber will be taken to have complied with subregulation (6)(b) in relation to a record made by the prescriber if the information contained in the record is collected electronically by a data source entity and is transmitted electronically to the monitored drugs database by the data source entity.

6—Variation of regulation 34—Written prescriptions

- (1) Regulation 34(1)(d)(iii)—delete subparagraph (iii)
- (2) Regulation 34—after subregulation (1) insert:

- (1a) A prescriber who writes a prescription for the supply of a monitored drug for human use—
 - (a) must keep a record of—
 - (i) the details required to be included and specified under subregulation (1); and
 - (ii) the date of birth of the person for whom the prescription has been written; and
 - (b) if the record is kept in electronic form—must transmit that record electronically to the Chief Executive so that it is received no later than the 7th day of the month following the month in which the drug was dispensed (or such later day as the Chief Executive may, on the application of the prescriber, authorise).

Maximum penalty: \$5 000.

Expiation fee: \$1 250.

- (1b) A prescriber will be taken to have complied with subregulation (1a)(b) in relation to a record made by the prescriber if the information contained in the record is collected electronically by a data source entity and is transmitted electronically to the monitored drugs database by the data source entity.

- (1c) The Minister may exempt a prescriber or class of prescribers from the operation of subregulation (1a)(b) if satisfied that proper cause exists for the exemption.

7—Variation of regulation 35—Dispensing prescriptions

- (1) Regulation 35(2)(e)(ii)—delete "drug of dependence" and substitute:
monitored drug
- (2) Regulation 35(16)—delete subregulation (16) and substitute:
- (16) For the purposes of this regulation, a prescription for a drug is *fully dispensed* if—
- (a) in the case of a prescription authorising dispensing of the drug once only—the drug has been dispensed on 1 occasion; or
- (b) in the case of a prescription authorising dispensing of the drug more than once—the drug has been dispensed for the last time.

8—Variation of regulation 35A—Dispensing prescriptions for drugs of dependence and other monitored drugs—special provisions

- (1) Regulation 35A(1)—delete "drug of dependence" and substitute:
monitored drug
- (2) Regulation 35A—after subregulation (1) insert:
- (1a) A pharmacist will be taken to have complied with subregulation (1)(b) in relation to a record made by the pharmacist if the information contained in the record is collected electronically by a data source entity and is transmitted electronically to the monitored drugs database by the data source entity.
- (3) Regulation 35A(3)—after the penalty provision insert:
Expiation fee: \$1 250.
- (4) Regulation 35A(5)—delete "drug of dependence" and substitute:
monitored drug

9—Variation of regulation 37—Special restrictions on prescription or supply of drugs of dependence by registered health practitioners and veterinary surgeons

- (1) Regulation 37(1)—after the penalty provision insert:
Expiation fee: \$1 250.
- (2) Regulation 37(2)—after the penalty provision insert:
Expiation fee: \$1 250.

10—Insertion of regulation 53A

After regulation 53 insert:

53A—Disclosure of confidential information contained in monitored drugs database (section 60A(1)(e) of Act)

- (1) Information contained in the monitored drugs database relating to a particular person may be disclosed to a prescriber involved in the medical treatment or care of that person to enable that prescriber to access that information and disclose that information to—
 - (a) any registered health practitioner involved in the medical treatment or care of that person; and
 - (b) any pharmacist to whom a prescription for a monitored drug for that person has been presented.
- (2) Information contained in the monitored drugs database relating to a particular person may be disclosed to a pharmacist to whom a prescription for a monitored drug for that person has been presented to enable that pharmacist to access that information and disclose that information to—
 - (a) any other pharmacist to whom a prescription for a monitored drug for that person has been presented; and
 - (b) any registered health practitioner involved in the medical treatment or care of that person.
- (3) Information contained in the monitored drugs database may be disclosed to a health authority of an Australian jurisdiction responsible for the administration or enforcement of a law that regulates the sale, supply, prescription, administration and use of monitored drugs.

Note—

As required by section 10AA(2) of the *Subordinate Legislation Act 1978*, the Minister has certified that, in the Minister's opinion, it is necessary or appropriate that these regulations come into operation as set out in these regulations.

Made by the Governor

after consultation by the Minister with the Controlled Substances Advisory Council and with the advice and consent of the Executive Council
on 22 October 2020

No 287 of 2020

STATE GOVERNMENT INSTRUMENTS

CASINO ACT 1997

SECTION 3(1)

Re-definition of Gaming Area

TAKE notice that pursuant to Section 3(1) of the *Casino Act 1997* (the Act), the gaming area (being a gaming area or premium gaming area within the casino premises as defined in the Act) will be re-defined by the Liquor and Gambling Commissioner.

The following plans indicate such parts of the casino premises (previously defined by his Excellency the Governor in Executive Council and depicted by a purple line for information purposes only) which are to be regarded as being a gaming area (defined and depicted by a green line), including those parts which are to be regarded as being a premium gaming area that are set aside for premium customers and are only accessible in accordance with Clause 8.7 of the Approved Licensing Agreement (defined and depicted by a yellow line).

This notice takes effect on a date to be notified to me by the holder of the casino licence, Skycity Adelaide Pty Ltd, which is required to notify me 14 days in advance of such date.

This notice supersedes any previous notices published to define or re-define a gaming area or a premium gaming area within the casino premises.

Dated: 19 October 2020

DINI SOULIO
Liquor and Gambling Commissioner

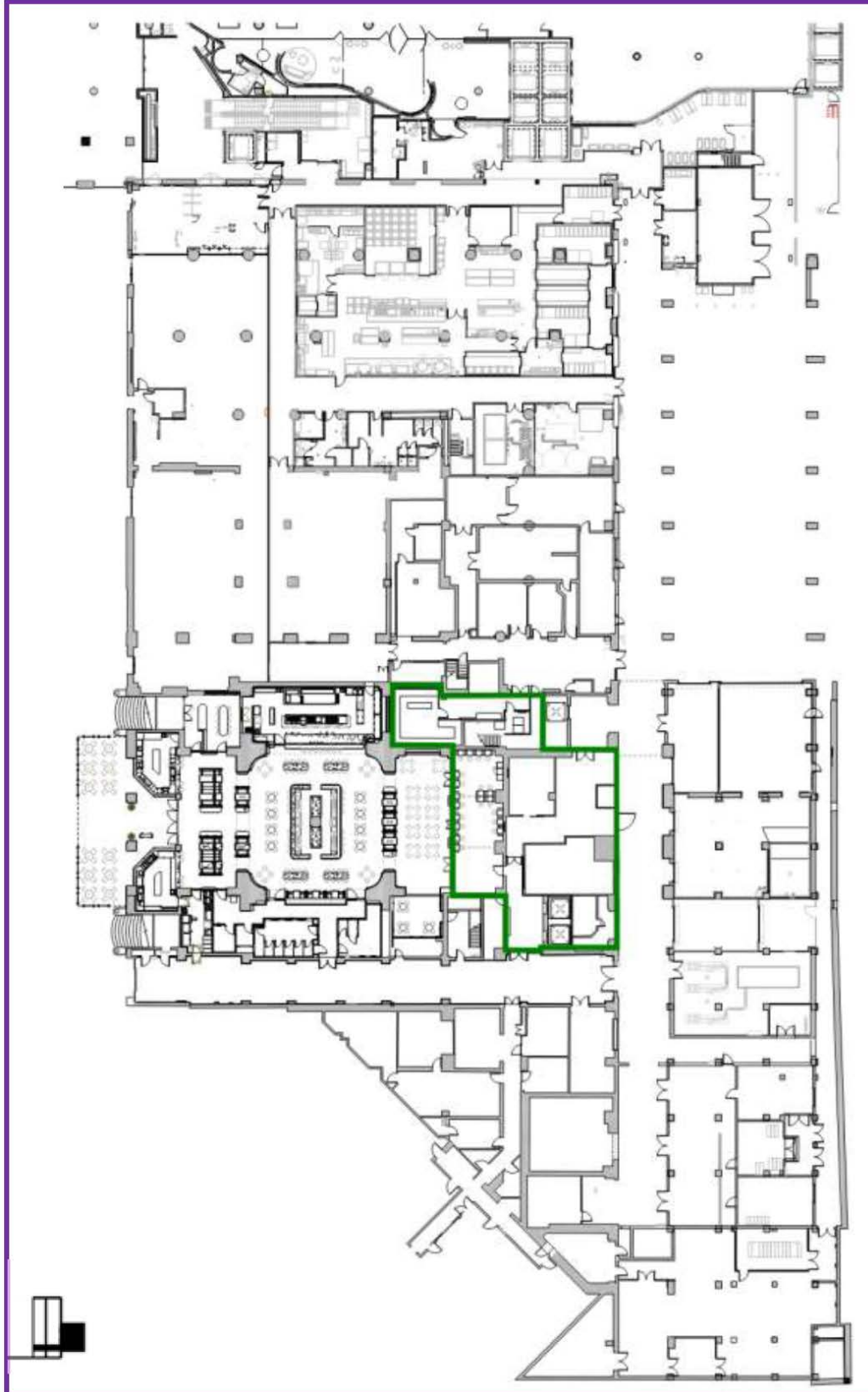
SCHEDULE 1

PLAN A—ADELAIDE CASINO—APPROVED GAMING AREA—PLATFORM LEVEL

Key:

Purple Line—Casino Premises

Green Line—Approved Gaming Area

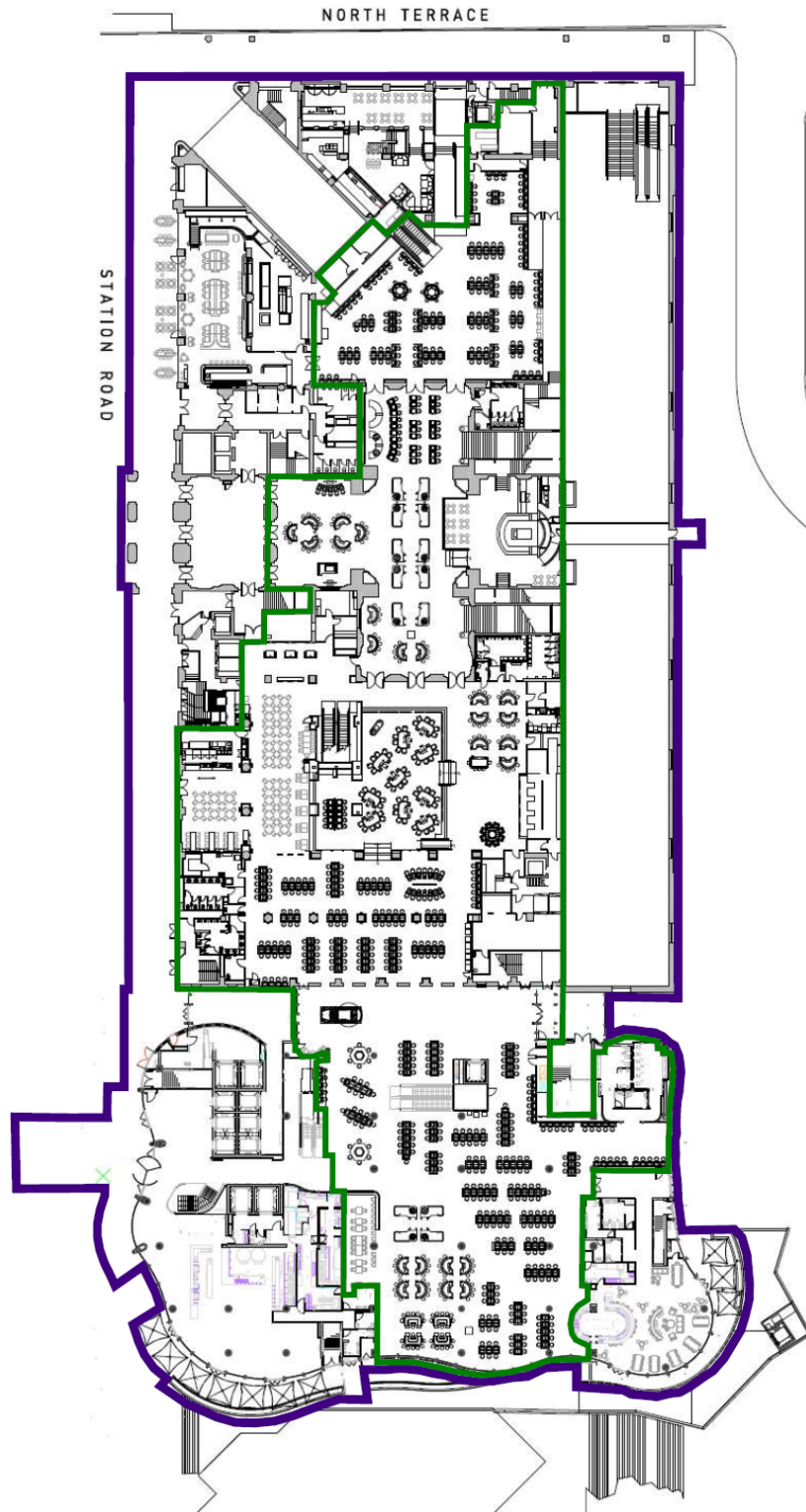


PLAN B—ADELAIDE CASINO—APPROVED GAMING AREA—GROUND LEVEL

Key:

Purple Line—Casino Premises

Green Line—Approved Gaming Area




PLAN C—ADELAIDE CASINO—APPROVED GAMING AREAS FLOOR PLAN—LEVEL 1

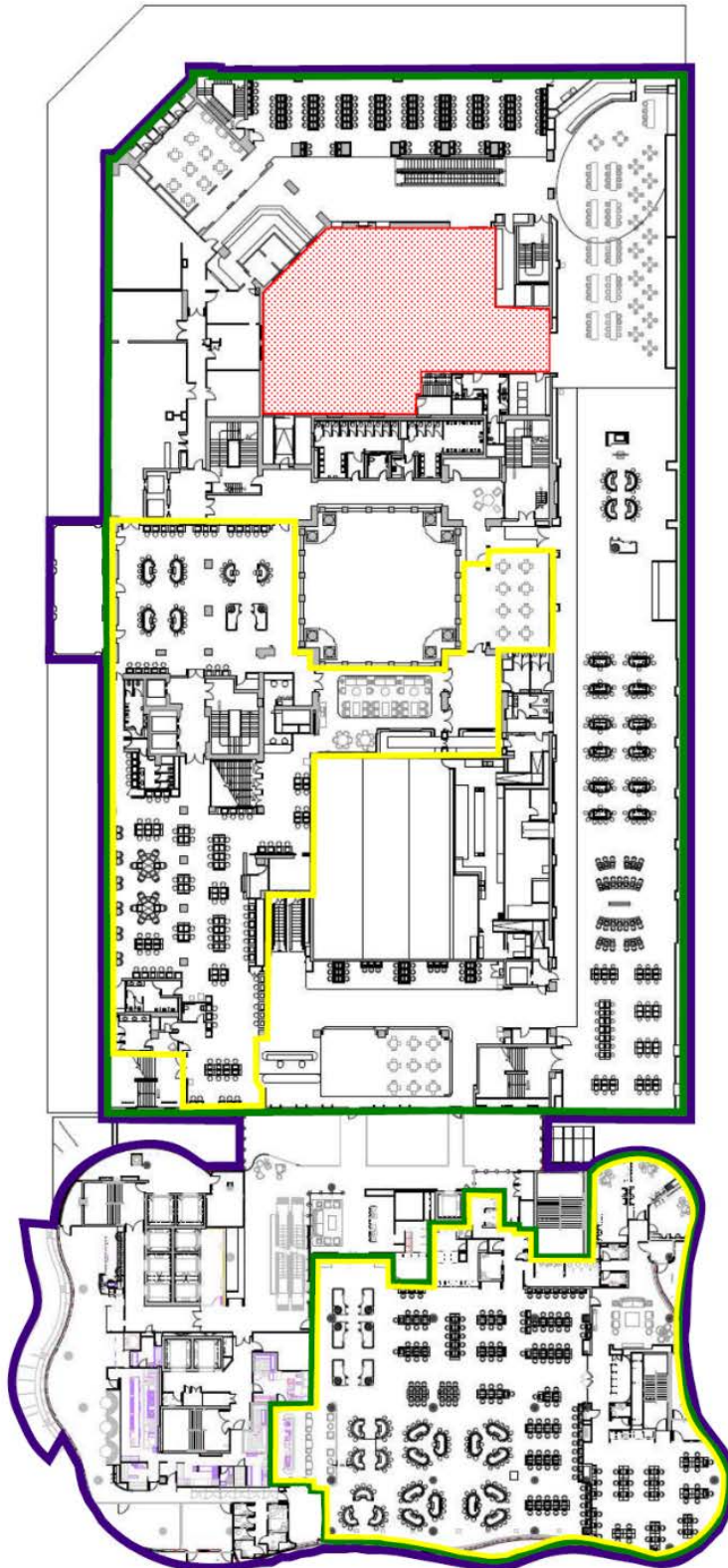
Key:

Green Line—Approved Gaming Area

Yellow Line—Approved Premium Gaming Area

Purple Line—Casino Premises

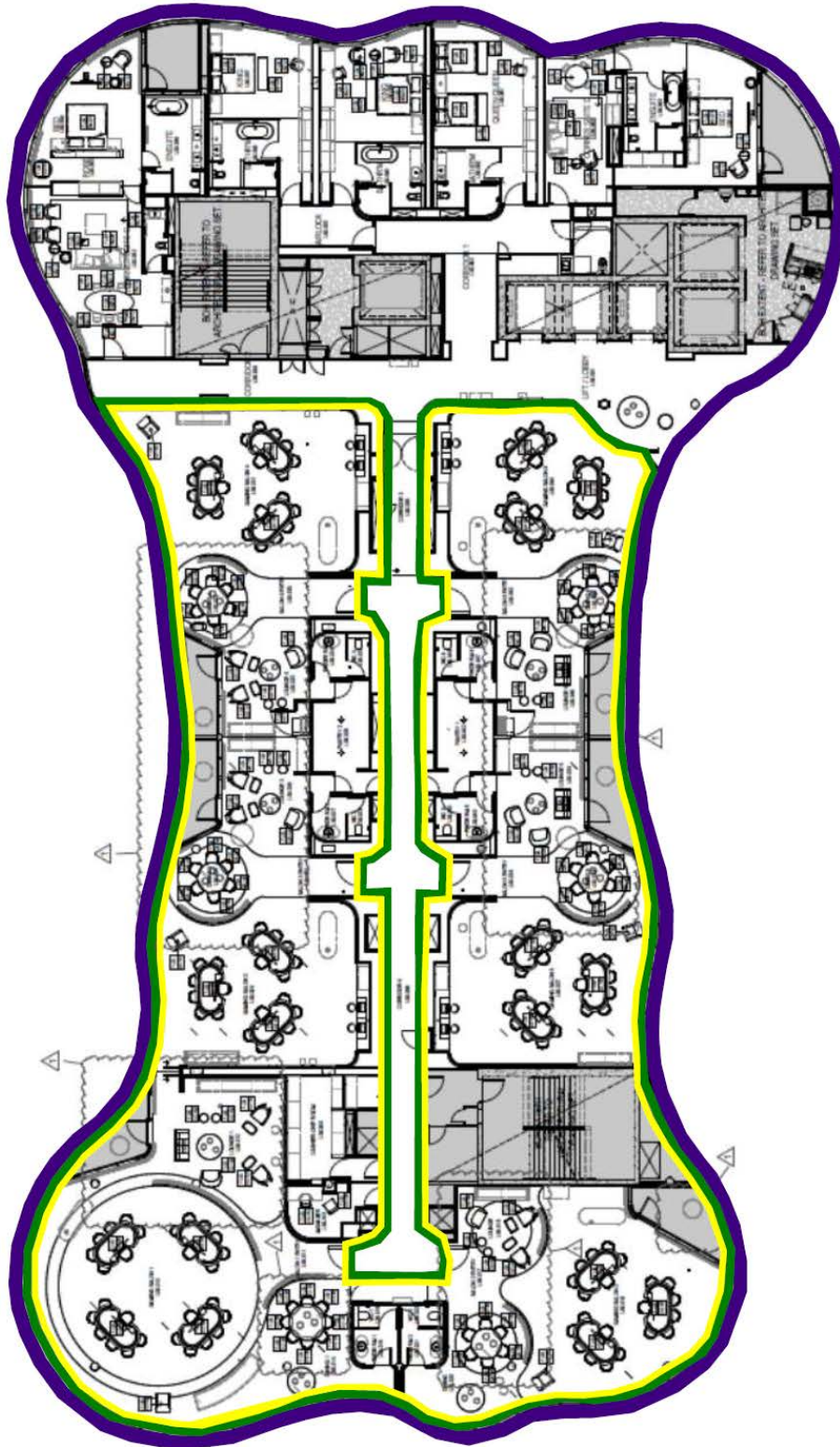
 —Excluded from Gaming Area



PLAN D—ADELAIDE CASINO—APPROVED GAMING AREAS—LEVEL 9

Key:

- Green Line—Approved Gaming Area
- Yellow Line—Approved Premium Gaming Area
- Purple Line—Casino Premises



ENVIRONMENT PROTECTION ACT 1993

SECTION 68

Revocation of Approval of Category B Containers

I, ANDREA KAYE WOODS, Delegate of the Environment Protection Authority ('the Authority'), pursuant to Section 68 of the Environment Protection Act 1993 (SA) ('the Act') hereby revoke the approvals of the classes of Category B containers sold in South Australia as identified by reference to the following matters, which are described in the first 4 columns of Schedule 1 of this Notice:

- (a) the product which each class of containers shall contain;
- (b) the size of the containers;
- (c) the type of containers;
- (d) the name of the holders of these approvals

These approvals are revoked as the Authority is satisfied that the waste management arrangement between the approval holder and the party named in Column 5 of Schedule 1 of this Notice has been cancelled.

Dated: 8 October 2020

ANDREA KAYE WOODS
Delegate of the Environment Protection Authority

SCHEDULE 1

Column 1	Column 2	Column 3	Column 4	Column 5
Product Name	Container Size	Container Type	Approval Holder	Collection Arrangements
Hot Kid Milk Beverage	245 ml	Can - Steel	Amyson Pty Ltd	Statewide Recycling
Aristocrat Pure Spring Water	350 ml	PET	Aristocrat Technologies Australia	Statewide Recycling
Premium Aussie Cider	330 ml	Glass	Australian Cider Company	Statewide Recycling
Boeing Pure Spring Water	600 ml	PET	Boeing Defence Australia	Statewide Recycling
Bondi Sparkling Citrus Blast	330 ml	Glass	Bondi Beverages Pty Ltd	Marine Stores Ltd
Bondi Sparkling Cola	330 ml	Glass	Bondi Beverages Pty Ltd	Marine Stores Ltd
Bondi Sparkling Creaming Soda	330 ml	Glass	Bondi Beverages Pty Ltd	Marine Stores Ltd
Bondi Sparkling Lemon Lime & Bitters	330 ml	Glass	Bondi Beverages Pty Ltd	Marine Stores Ltd
Bondi Sparkling Mandarin	330 ml	Glass	Bondi Beverages Pty Ltd	Marine Stores Ltd
CJD Equipment Natural Spring Water	600 ml	PET	CJD Equipment Pty Ltd	Flagcan Distributors
Slow Cow	250 ml	Can - Aluminium	Chicane Marketing	Statewide Recycling
Roseade Rose Lemonade	275 ml	Glass	Chirping Bird Wines Pty Ltd	Statewide Recycling
Clare Valley Toyota Spring Water	350 ml	PET	Clare Valley Toyota	Statewide Recycling
Sidra Del Verano Apple & Pear Cider	330 ml	Glass	Conquistador Brand Management	Marine Stores Ltd
Sidra Del Verano Apple & Pear Cider	500 ml	Glass	Conquistador Brand Management	Marine Stores Ltd
Sidra Del Verano Apple Blackcurrant & Cranberry Cider	500 ml	Glass	Conquistador Brand Management	Marine Stores Ltd
Sidra Del Verano Apple Mango & Passionfruit Cider	500 ml	Glass	Conquistador Brand Management	Marine Stores Ltd
Sidra Del Verano Apple Peach & Apricot Cider	500 ml	Glass	Conquistador Brand Management	Marine Stores Ltd
Sidra Del Verano Green Apple Cider	330 ml	Glass	Conquistador Brand Management	Marine Stores Ltd
Sidra Del Verano Spanish Apple Cider	330 ml	Glass	Conquistador Brand Management	Marine Stores Ltd
Sidra Del Verano Spanish Apple Cider	500 ml	Glass	Conquistador Brand Management	Marine Stores Ltd
Seva Pure Maple Water	330 ml	LPB - Aseptic	Eco Farms Pty Ltd	Statewide Recycling
The Event 2015 Premium Australian Spring Water	500 ml	PET	Eventful	Statewide Recycling
Lite N Easy Cold Pressed Orange Juice With Pulp	190 ml	PET	GD Mitchell Enterprises Pty Ltd t/as Mitchells Quality Foods	Statewide Recycling
Ultra Jaya Chocolate	200 ml	LPB - Aseptic	Hean Corporation Pty Ltd	Flagcan Distributors
Ultra Jaya Chocolate	125 ml	LPB - Aseptic	Hean Corporation Pty Ltd	Flagcan Distributors
Ultra Jaya Strawberry	125 ml	LPB - Aseptic	Hean Corporation Pty Ltd	Flagcan Distributors
Ultra Jaya Strawberry	200 ml	LPB - Aseptic	Hean Corporation Pty Ltd	Flagcan Distributors
Ultra Jaya Teh Kotak Jasmine Tea	300 ml	LPB - Aseptic	Hean Corporation Pty Ltd	Flagcan Distributors
Zamzam 4 Life	350 ml	PET	Human Appeal	Statewide Recycling
Kenny Session Ale	330 ml	Glass	Kenny Brewing Pty Ltd	Marine Stores Ltd
Porsche Pure Spring Water	300 ml	PET	MCI Australia	Statewide Recycling
Better Water	575 ml	PET	Made Brands Pty Ltd	Statewide Recycling
Cocobella Coconut Water Chilled Chocolate	425 ml	PET	Made Brands Pty Ltd	Statewide Recycling
Cocobella Coconut Water Chilled Straight Up	425 ml	PET	Made Brands Pty Ltd	Statewide Recycling
Cocobella Kids Berry	200 ml	LPB - Aseptic	Made Brands Pty Ltd	Statewide Recycling
Cocobella Kids Tropical	200 ml	LPB - Aseptic	Made Brands Pty Ltd	Statewide Recycling
Cocobella Sparkling Coconut Cider Mango	250 ml	Can - Aluminium	Made Brands Pty Ltd	Statewide Recycling
Cocobella Sparkling Coconut Cider Passionfruit	250 ml	Can - Aluminium	Made Brands Pty Ltd	Statewide Recycling

Column 1	Column 2	Column 3	Column 4	Column 5
Product Name	Container Size	Container Type	Approval Holder	Collection Arrangements
Cocobella Sparkling Coconut Cider Strawberry Lemon	250 ml	Can - Aluminium	Made Brands Pty Ltd	Statewide Recycling
Cocobella Straight Up	500 ml	LPB - Aseptic	Made Brands Pty Ltd	Statewide Recycling
Impressed Cold Pressed Juice Berry Beets	325 ml	PET	Made Brands Pty Ltd	Statewide Recycling
NW Nutrient Water Endurance Ribose & Ginseng	580 ml	PET	Made Brands Pty Ltd	Statewide Recycling
NW Nutrient Water Green Tea Antioxidant Hibiscus & Grape Seed	580 ml	PET	Made Brands Pty Ltd	Statewide Recycling
NW Nutrient Water Multi Vitamin Vitamins A, B, C and D	580 ml	PET	Made Brands Pty Ltd	Statewide Recycling
NW Nutrient Water Passionfruit Citrus Energy Guarana & B Vitamins	580 ml	PET	Made Brands Pty Ltd	Statewide Recycling
NW Nutrient Water Valencia Orange Immunity Echinacea & Vitamin C	580 ml	PET	Made Brands Pty Ltd	Statewide Recycling
NW Nutrient Water Antioxidant Green Tea	575 ml	PET	Made Brands Pty Ltd	Statewide Recycling
NW Nutrient Water Energy Passionfruit Citrus	575 ml	PET	Made Brands Pty Ltd	Statewide Recycling
NW Nutrient Water Rehab Pomegranate Berry	575 ml	PET	Made Brands Pty Ltd	Statewide Recycling
NWX Nutrient Water Refocus Super Low Calorie	575 ml	PET	Made Brands Pty Ltd	Statewide Recycling
Schnobs Cold Brew Black Coffee	325 ml	PET	Made Brands Pty Ltd	Statewide Recycling
Schnobs Cold Brew Caramel Latte	325 ml	PET	Made Brands Pty Ltd	Statewide Recycling
Schnobs Cold Brew Double Latte	325 ml	PET	Made Brands Pty Ltd	Statewide Recycling
Schnobs Cold Brew Mocha Latte	325 ml	PET	Made Brands Pty Ltd	Statewide Recycling
Spring & Grove Apple & Kiwi	330 ml	Glass	Mayim Beverages T/AS	Marine Stores Ltd
Spring & Grove Coconut & Raspberry	330 ml	Glass	Mayim Beverages T/AS	Marine Stores Ltd
Spring & Grove Cucumber & Lime	330 ml	Glass	Mayim Beverages T/AS	Marine Stores Ltd
Spring & Grove Pineapple & Strawberry	330 ml	Glass	Mayim Beverages T/AS	Marine Stores Ltd
Spring & Grove Pink Grapefruit	330 ml	Glass	Mayim Beverages T/AS	Marine Stores Ltd
Spring & Grove Watermelon & Lime	330 ml	Glass	Mayim Beverages T/AS	Marine Stores Ltd
7 Up Cherry	355 ml	Can - Aluminium	Metro Beverage Company Adelaide Pty Ltd	Statewide Recycling
A & W Diet Root Beer	355 ml	Can - Aluminium	Metro Beverage Company Adelaide Pty Ltd	Statewide Recycling
ALO Appeal	500 ml	PET	Metro Beverage Company Adelaide Pty Ltd	Statewide Recycling
ALO Awaken	500 ml	PET	Metro Beverage Company Adelaide Pty Ltd	Statewide Recycling
Arnold Palmer	340 ml	Can - Aluminium	Metro Beverage Company Adelaide Pty Ltd	Statewide Recycling
Aussie Soda Co Classic Cola	2250 ml	PET	Metro Beverage Company Adelaide Pty Ltd	Statewide Recycling
Aussie Soda Co Classic Sarsaparilla	2250 ml	PET	Metro Beverage Company Adelaide Pty Ltd	Statewide Recycling
Aussie Soda Co Cream Soda	2250 ml	PET	Metro Beverage Company Adelaide Pty Ltd	Statewide Recycling
Aussie Soda Co Lemonade	2250 ml	PET	Metro Beverage Company Adelaide Pty Ltd	Statewide Recycling
Aussie Soda Co Orange Soda	2250 ml	PET	Metro Beverage Company Adelaide Pty Ltd	Statewide Recycling
Aussie Soda Co Original Lemon Squash	2250 ml	PET	Metro Beverage Company Adelaide Pty Ltd	Statewide Recycling
Aussie Soda Co Raspberry Soda	2250 ml	PET	Metro Beverage Company Adelaide Pty Ltd	Statewide Recycling
Aussie Soda Co Soda Water	2250 ml	PET	Metro Beverage Company Adelaide Pty Ltd	Statewide Recycling
BAI Mango Malawi	530 ml	PET	Metro Beverage Company Adelaide Pty Ltd	Statewide Recycling
BAI Panama Peach	530 ml	PET	Metro Beverage Company Adelaide Pty Ltd	Statewide Recycling
BAI Sao Paulo Strawberry Lemonade	530 ml	PET	Metro Beverage Company Adelaide Pty Ltd	Statewide Recycling
Bai Anti Oxidant Coco Fusion Malokai Coconut	530 ml	PET	Metro Beverage Company Adelaide Pty Ltd	Statewide Recycling
Bai Anti Oxidant Infusion Brasilia Blueberry	530 ml	PET	Metro Beverage Company Adelaide Pty Ltd	Statewide Recycling
Bai Anti Oxidant Infusion Costa Rica Clementine	530 ml	PET	Metro Beverage Company Adelaide Pty Ltd	Statewide Recycling

Column 1	Column 2	Column 3	Column 4	Column 5
Product Name	Container Size	Container Type	Approval Holder	Collection Arrangements
Bai Anti Oxidant Infusion Ipanema Pomegranate	530 ml	PET	Metro Beverage Company Adelaide Pty Ltd	Statewide Recycling
Bai Anti Oxidant Infusion Kula Watermelon	530 ml	PET	Metro Beverage Company Adelaide Pty Ltd	Statewide Recycling
Bai Anti Oxidant Infusion Sumatra Dragonfruit	530 ml	PET	Metro Beverage Company Adelaide Pty Ltd	Statewide Recycling
Big Red Soda	355 ml	Can - Aluminium	Metro Beverage Company Adelaide Pty Ltd	Statewide Recycling
Boylan Birch Beer	355 ml	Glass	Metro Beverage Company Adelaide Pty Ltd	Statewide Recycling
Cactus Cooler	355 ml	Can - Aluminium	Metro Beverage Company Adelaide Pty Ltd	Statewide Recycling
Calypso Coconut Colada Limeade	591 ml	Glass	Metro Beverage Company Adelaide Pty Ltd	Statewide Recycling
Calypso Natural Limeade	591 ml	Glass	Metro Beverage Company Adelaide Pty Ltd	Statewide Recycling
Canada Dry Green Tea	355 ml	Can - Aluminium	Metro Beverage Company Adelaide Pty Ltd	Statewide Recycling
Cherry Coke	2000 ml	PET	Metro Beverage Company Adelaide Pty Ltd	Statewide Recycling
Cherry Pepsi	355 ml	Can - Aluminium	Metro Beverage Company Adelaide Pty Ltd	Statewide Recycling
Dr Pepper	240 ml	Glass	Metro Beverage Company Adelaide Pty Ltd	Statewide Recycling
Dr Pepper	2000 ml	PET	Metro Beverage Company Adelaide Pty Ltd	Statewide Recycling
Dr Pepper Diet	355 ml	Can - Aluminium	Metro Beverage Company Adelaide Pty Ltd	Statewide Recycling
Fanta Fruit Twist	2000 ml	PET	Metro Beverage Company Adelaide Pty Ltd	Statewide Recycling
Henry Creamy Soda	330 ml	Glass	Metro Beverage Company Adelaide Pty Ltd	Statewide Recycling
Henry Lemon Squashed	330 ml	Glass	Metro Beverage Company Adelaide Pty Ltd	Statewide Recycling
Henry Pineapple Soda	330 ml	Glass	Metro Beverage Company Adelaide Pty Ltd	Statewide Recycling
Henry Portello	330 ml	Glass	Metro Beverage Company Adelaide Pty Ltd	Statewide Recycling
Henry Raspberry Soda	330 ml	Glass	Metro Beverage Company Adelaide Pty Ltd	Statewide Recycling
Jet Fast Water	750 ml	PET	Metro Beverage Company Adelaide Pty Ltd	Statewide Recycling
Little Miracles Organic Energiser Black Tea Peach Ginseng Acai Agave	330 ml	PET	Metro Beverage Company Adelaide Pty Ltd	Statewide Recycling
Little Miracles Organic Energiser Green Tea Pomegranate Ginseng Acai Agave	330 ml	PET	Metro Beverage Company Adelaide Pty Ltd	Statewide Recycling
Little Miracles Organic Energiser Lemongrass Orange Ginger Ginseng Agave	330 ml	PET	Metro Beverage Company Adelaide Pty Ltd	Statewide Recycling
Little Miracles Organic Energiser Rooibos & Elderberry Ginger Ginseng Agave	330 ml	PET	Metro Beverage Company Adelaide Pty Ltd	Statewide Recycling
Little Miracles Organic Energiser White Tea Cherry Ginseng Acai Agave	330 ml	PET	Metro Beverage Company Adelaide Pty Ltd	Statewide Recycling
Mello Yellow	355 ml	Can - Aluminium	Metro Beverage Company Adelaide Pty Ltd	Statewide Recycling
Mountain Dew Code Red	355 ml	Can - Aluminium	Metro Beverage Company Adelaide Pty Ltd	Statewide Recycling
Mountain Dew Live Wire	355 ml	Can - Aluminium	Metro Beverage Company Adelaide Pty Ltd	Statewide Recycling
Mountain Dew Voltage	355 ml	Can - Aluminium	Metro Beverage Company Adelaide Pty Ltd	Statewide Recycling
Mug Root Beer	355 ml	Can - Aluminium	Metro Beverage Company Adelaide Pty Ltd	Statewide Recycling
Natures Valley Apple & Blackcurrant Juice	350 ml	Glass	Metro Beverage Company Adelaide Pty Ltd	Statewide Recycling
Natures Valley Apple & Blackcurrant Juice	250 ml	Glass	Metro Beverage Company Adelaide Pty Ltd	Statewide Recycling
Natures Valley Apple Juice	250 ml	Glass	Metro Beverage Company Adelaide Pty Ltd	Statewide Recycling
Natures Valley Apple Juice	350 ml	Glass	Metro Beverage Company Adelaide Pty Ltd	Statewide Recycling
Natures Valley Mango Banana Burst	350 ml	Glass	Metro Beverage Company Adelaide Pty Ltd	Statewide Recycling
Natures Valley Mango Banana Burst	250 ml	Glass	Metro Beverage Company Adelaide Pty Ltd	Statewide Recycling

Column 1	Column 2	Column 3	Column 4	Column 5
Product Name	Container Size	Container Type	Approval Holder	Collection Arrangements
Natures Valley Orange & Mango Juice	350 ml	Glass	Metro Beverage Company Adelaide Pty Ltd	Statewide Recycling
Natures Valley Orange & Mango Juice	250 ml	Glass	Metro Beverage Company Adelaide Pty Ltd	Statewide Recycling
Natures Valley Orange Juice	350 ml	Glass	Metro Beverage Company Adelaide Pty Ltd	Statewide Recycling
Natures Valley Orange Juice	250 ml	Glass	Metro Beverage Company Adelaide Pty Ltd	Statewide Recycling
Natures Valley Pineapple Juice	250 ml	Glass	Metro Beverage Company Adelaide Pty Ltd	Statewide Recycling
Natures Valley Pineapple Juice	350 ml	Glass	Metro Beverage Company Adelaide Pty Ltd	Statewide Recycling
Retro Creaming Soda	375 ml	Glass	Metro Beverage Company Adelaide Pty Ltd	Statewide Recycling
Retro Creaming Soda	600 ml	PET	Metro Beverage Company Adelaide Pty Ltd	Statewide Recycling
Retro Lemon Lime	375 ml	Glass	Metro Beverage Company Adelaide Pty Ltd	Statewide Recycling
Retro Lemon Lime	600 ml	PET	Metro Beverage Company Adelaide Pty Ltd	Statewide Recycling
Retro Lemon Squash	375 ml	Glass	Metro Beverage Company Adelaide Pty Ltd	Statewide Recycling
Retro Lemon Squash	600 ml	PET	Metro Beverage Company Adelaide Pty Ltd	Statewide Recycling
Retro Lime Quench	375 ml	Glass	Metro Beverage Company Adelaide Pty Ltd	Statewide Recycling
Retro Lime Quench	600 ml	PET	Metro Beverage Company Adelaide Pty Ltd	Statewide Recycling
Retro Passion Fruit	375 ml	Glass	Metro Beverage Company Adelaide Pty Ltd	Statewide Recycling
Retro Passionfruit	600 ml	PET	Metro Beverage Company Adelaide Pty Ltd	Statewide Recycling
Retro Portello	600 ml	PET	Metro Beverage Company Adelaide Pty Ltd	Statewide Recycling
Retro Portello	375 ml	Glass	Metro Beverage Company Adelaide Pty Ltd	Statewide Recycling
Retro Raspberry	375 ml	Glass	Metro Beverage Company Adelaide Pty Ltd	Statewide Recycling
Retro Raspberry	600 ml	PET	Metro Beverage Company Adelaide Pty Ltd	Statewide Recycling
Ruby Red	355 ml	Can - Aluminium	Metro Beverage Company Adelaide Pty Ltd	Statewide Recycling
Sealand Birk Elderflower	330 ml	PET	Metro Beverage Company Adelaide Pty Ltd	Statewide Recycling
Sealand Birk Original	330 ml	PET	Metro Beverage Company Adelaide Pty Ltd	Statewide Recycling
Sunkist Cherry Limeade	355 ml	Can - Aluminium	Metro Beverage Company Adelaide Pty Ltd	Statewide Recycling
Sunkist Grape	355 ml	Can - Aluminium	Metro Beverage Company Adelaide Pty Ltd	Statewide Recycling
Sunkist Strawberry	355 ml	Can - Aluminium	Metro Beverage Company Adelaide Pty Ltd	Statewide Recycling
Tab Cola	355 ml	Can - Aluminium	Metro Beverage Company Adelaide Pty Ltd	Statewide Recycling
Fruity Flavorits Berry	250 ml	PET	Metro Beverage Company Pty Ltd	Statewide Recycling
Fruity Flavorits Bubblegum Bliss	250 ml	PET	Metro Beverage Company Pty Ltd	Statewide Recycling
Fruity Flavorits Chaotic Cola	250 ml	PET	Metro Beverage Company Pty Ltd	Statewide Recycling
Fruity Flavorits Cookie Monster Lemonade	250 ml	PET	Metro Beverage Company Pty Ltd	Statewide Recycling
Fruity Flavorits Elmo Raspberry	250 ml	PET	Metro Beverage Company Pty Ltd	Statewide Recycling
Fruity Flavorits Madagascar Jungle Jive	250 ml	PET	Metro Beverage Company Pty Ltd	Statewide Recycling
Fruity Flavorits Madagascar Long Nectar	250 ml	PET	Metro Beverage Company Pty Ltd	Statewide Recycling
Fruity Flavorits Madagascar Royal Reserve	250 ml	PET	Metro Beverage Company Pty Ltd	Statewide Recycling
Fruity Flavorits Madagascar Zebra Zapper	250 ml	PET	Metro Beverage Company Pty Ltd	Statewide Recycling
Fruity Flavorits Orange Ooz	250 ml	PET	Metro Beverage Company Pty Ltd	Statewide Recycling
Fruity Flavorits Sublime Slime	250 ml	PET	Metro Beverage Company Pty Ltd	Statewide Recycling

Column 1	Column 2	Column 3	Column 4	Column 5
Product Name	Container Size	Container Type	Approval Holder	Collection Arrangements
Fruity Flavorits Sunberry Grove	250 ml	PET	Metro Beverage Company Pty Ltd	Statewide Recycling
Fruity Flavorits Totally Bubblegum	250 ml	PET	Metro Beverage Company Pty Ltd	Statewide Recycling
Fruity Flavorits Tropical Deelish	250 ml	PET	Metro Beverage Company Pty Ltd	Statewide Recycling
Fruity Flavorits Tropical Tango	250 ml	PET	Metro Beverage Company Pty Ltd	Statewide Recycling
Red Eye Gold	330 ml	Glass	Metro Beverage Company Pty Ltd	Statewide Recycling
Red Eye Power	250 ml	Can - Aluminium	Metro Beverage Company Pty Ltd	Statewide Recycling
Shine Orange Pomegranate Sparkling Spritzer	330 ml	Glass	Metro Beverage Company Pty Ltd	Statewide Recycling
Bee Water Natural Spring Water	350 ml	PET	Nippys Fruit Juices Pty Ltd	Statewide Recycling
Ce Jus Apple & Guava	400 ml	Glass	Nippys Fruit Juices Pty Ltd	Statewide Recycling
Ce Jus Apple & Passionfruit	400 ml	Glass	Nippys Fruit Juices Pty Ltd	Statewide Recycling
Ce Jus Apple & Pear	400 ml	Glass	Nippys Fruit Juices Pty Ltd	Statewide Recycling
Ce Jus Apricot	400 ml	Glass	Nippys Fruit Juices Pty Ltd	Statewide Recycling
Ce Jus Banana & Mango	400 ml	Glass	Nippys Fruit Juices Pty Ltd	Statewide Recycling
Ce Jus Tomato	400 ml	Glass	Nippys Fruit Juices Pty Ltd	Statewide Recycling
Ce Jus Tropical	400 ml	Glass	Nippys Fruit Juices Pty Ltd	Statewide Recycling
Nippys Apple & Blackcurrant Juice	300 ml	PET	Nippys Fruit Juices Pty Ltd	Statewide Recycling
Nippys 50/50 Fruit & Vegetable Juice Blend	350 ml	PET	Nippys Fruit Juices Pty Ltd	Statewide Recycling
Nippys All Natural Cola	600 ml	PET	Nippys Fruit Juices Pty Ltd	Statewide Recycling
Nippys All Natural Cola	500 ml	PET	Nippys Fruit Juices Pty Ltd	Statewide Recycling
Nippys Apple & Blackcurrant Juice	250 ml	PET	Nippys Fruit Juices Pty Ltd	Statewide Recycling
Nippys Apple & Cranberry Fruit Juice	500 ml	PET	Nippys Fruit Juices Pty Ltd	Statewide Recycling
Nippys Apple & Guava Fruit Juice	300 ml	Glass	Nippys Fruit Juices Pty Ltd	Statewide Recycling
Nippys Apple & Guava Fruit Juice	500 ml	PET	Nippys Fruit Juices Pty Ltd	Statewide Recycling
Nippys Apple & Pear Fruit Juice	300 ml	Glass	Nippys Fruit Juices Pty Ltd	Statewide Recycling
Nippys Apple Juice	250 ml	PET	Nippys Fruit Juices Pty Ltd	Statewide Recycling
Nippys Apple Juice	300 ml	PET	Nippys Fruit Juices Pty Ltd	Statewide Recycling
Nippys Apple Juice	500 ml	LPB - Aseptic	Nippys Fruit Juices Pty Ltd	Statewide Recycling
Nippys Apple Raspberry Mineral Water	500 ml	Plastic	Nippys Fruit Juices Pty Ltd	Statewide Recycling
Nippys Apricot Nectar	300 ml	Glass	Nippys Fruit Juices Pty Ltd	Statewide Recycling
Nippys Fruchocs Flavoured Milk	375 ml	LPB - Aseptic	Nippys Fruit Juices Pty Ltd	Statewide Recycling
Nippys Fruitylicious Apple & Blackcurrant Juice	300 ml	PET	Nippys Fruit Juices Pty Ltd	Statewide Recycling
Nippys Fruitylicious Apple Juice	300 ml	PET	Nippys Fruit Juices Pty Ltd	Statewide Recycling
Nippys Fruitylicious Orange Juice	300 ml	PET	Nippys Fruit Juices Pty Ltd	Statewide Recycling
Nippys Fruitylicious Pineapple Juice	300 ml	PET	Nippys Fruit Juices Pty Ltd	Statewide Recycling
Nippys Fruitylicious Tomato Juice	300 ml	PET	Nippys Fruit Juices Pty Ltd	Statewide Recycling
Nippys Grapefruit Juice	250 ml	LPB - Aseptic	Nippys Fruit Juices Pty Ltd	Statewide Recycling
Nippys Iced Banana Flavoured Milk	250 ml	LPB - Aseptic	Nippys Fruit Juices Pty Ltd	Statewide Recycling
Nippys Iced Coffee	250 ml	LPB - Aseptic	Nippys Fruit Juices Pty Ltd	Statewide Recycling
Nippys Iced Pina Colada	375 ml	LPB - Aseptic	Nippys Fruit Juices Pty Ltd	Statewide Recycling
Nippys Iced Vanilla Malt	375 ml	LPB - Aseptic	Nippys Fruit Juices Pty Ltd	Statewide Recycling
Nippys Lactose Free Chocolate Flavoured Milk	200 ml	LPB - Aseptic	Nippys Fruit Juices Pty Ltd	Statewide Recycling
Nippys Lactose Free Strawberry Flavoured Milk	200 ml	LPB - Aseptic	Nippys Fruit Juices Pty Ltd	Statewide Recycling
Nippys Lemon Mineral Water	500 ml	Plastic	Nippys Fruit Juices Pty Ltd	Statewide Recycling
Nippys Lemon/Lime Mineral Water	500 ml	Plastic	Nippys Fruit Juices Pty Ltd	Statewide Recycling
Nippys Little Suckers Apple Blueberry Flavoured Fruit Drink	250 ml	HDPE	Nippys Fruit Juices Pty Ltd	Statewide Recycling
Nippys Little Suckers Apple Fruit Drink	250 ml	HDPE	Nippys Fruit Juices Pty Ltd	Statewide Recycling
Nippys Little Suckers Apple Lime Flavoured Fruit Drink	250 ml	HDPE	Nippys Fruit Juices Pty Ltd	Statewide Recycling
Nippys Little Suckers Apple Raspberry Flavoured Fruit Drink	250 ml	HDPE	Nippys Fruit Juices Pty Ltd	Statewide Recycling
Nippys Little Suckers Orange Flavoured Fruit Drink	250 ml	HDPE	Nippys Fruit Juices Pty Ltd	Statewide Recycling
Nippys Little Suckers Tropical Flavoured Fruit Drink	250 ml	HDPE	Nippys Fruit Juices Pty Ltd	Statewide Recycling
Nippys Mineral Water	500 ml	Plastic	Nippys Fruit Juices Pty Ltd	Statewide Recycling
Nippys Orange & Mango Juice	300 ml	PET	Nippys Fruit Juices Pty Ltd	Statewide Recycling
Nippys Orange & Passionfruit Juice	300 ml	PET	Nippys Fruit Juices Pty Ltd	Statewide Recycling
Nippys Orange & Mango Juice	250 ml	LPB - Aseptic	Nippys Fruit Juices Pty Ltd	Statewide Recycling
Nippys Orange Juice	300 ml	PET	Nippys Fruit Juices Pty Ltd	Statewide Recycling
Nippys Orange Mineral Water	500 ml	Plastic	Nippys Fruit Juices Pty Ltd	Statewide Recycling
Nippys Organic Spring Water	600 ml	Plastic	Nippys Fruit Juices Pty Ltd	Statewide Recycling
Nippys Paradise Punch Mineral Water	500 ml	Plastic	Nippys Fruit Juices Pty Ltd	Statewide Recycling
Nippys Pineapple Crush Pineapple Juice	300 ml	PET	Nippys Fruit Juices Pty Ltd	Statewide Recycling
Nippys Pineapple Crush Pineapple Juice	250 ml	PET	Nippys Fruit Juices Pty Ltd	Statewide Recycling

Column 1	Column 2	Column 3	Column 4	Column 5
Product Name	Container Size	Container Type	Approval Holder	Collection Arrangements
Nippys Pulp Free Unsweetened Orange Juice	500 ml	PET	Nippys Fruit Juices Pty Ltd	Statewide Recycling
Nippys Pure Water	500 ml	PET	Nippys Fruit Juices Pty Ltd	Statewide Recycling
Nippys Right Star Chocolate Blast	350 ml	LPB - Aseptic	Nippys Fruit Juices Pty Ltd	Statewide Recycling
Nippys Right Start Wicked Vanilla	350 ml	LPB - Aseptic	Nippys Fruit Juices Pty Ltd	Statewide Recycling
Nippys Sparkling Mineral Water Apple Raspberry	350 ml	PET	Nippys Fruit Juices Pty Ltd	Statewide Recycling
Nippys Sparkling Mineral Water Lemon	350 ml	PET	Nippys Fruit Juices Pty Ltd	Statewide Recycling
Nippys Sparkling Mineral Water Lemon Lime	350 ml	PET	Nippys Fruit Juices Pty Ltd	Statewide Recycling
Nippys Sparkling Mineral Water Orange	350 ml	PET	Nippys Fruit Juices Pty Ltd	Statewide Recycling
Nippys Sparkling Mineral Water Paradise Punch	350 ml	PET	Nippys Fruit Juices Pty Ltd	Statewide Recycling
Nippys Spring Water	500 ml	Plastic	Nippys Fruit Juices Pty Ltd	Statewide Recycling
Nippys Spring Water Screw & Sports Cap	600 ml	Plastic	Nippys Fruit Juices Pty Ltd	Statewide Recycling
Nippys Tangy Lemon Fruit Drink	300 ml	PET	Nippys Fruit Juices Pty Ltd	Statewide Recycling
Nippys Tropical Fruit Juice	300 ml	Glass	Nippys Fruit Juices Pty Ltd	Statewide Recycling
Nippys Tropical Juice	250 ml	PET	Nippys Fruit Juices Pty Ltd	Statewide Recycling
Nippys Tropical Juice	300 ml	PET	Nippys Fruit Juices Pty Ltd	Statewide Recycling
Nippys Tropical Juice	500 ml	PET	Nippys Fruit Juices Pty Ltd	Statewide Recycling
Nippys True Grit Artic Blast	660 ml	PET	Nippys Fruit Juices Pty Ltd	Statewide Recycling
Nippys True Grit Berry Rush	660 ml	PET	Nippys Fruit Juices Pty Ltd	Statewide Recycling
Nippys True Grit Lemon Lime	660 ml	PET	Nippys Fruit Juices Pty Ltd	Statewide Recycling
Nippys Unsweetened Orange Juice	250 ml	PET	Nippys Fruit Juices Pty Ltd	Statewide Recycling
Nippys Unsweetened Orange Juice	300 ml	PET	Nippys Fruit Juices Pty Ltd	Statewide Recycling
Nippys Yosip Mango Banana Drinking Yoghurt	250 ml	HDPE	Nippys Fruit Juices Pty Ltd	Statewide Recycling
Nippys Yosip Mixed Berry Drinking Yoghurt	250 ml	HDPE	Nippys Fruit Juices Pty Ltd	Statewide Recycling
Nippys Yosip Strawberry Drinking Yoghurt	250 ml	HDPE	Nippys Fruit Juices Pty Ltd	Statewide Recycling
OOJ Juice From Organic Oranges	500 ml	PET	Nippys Fruit Juices Pty Ltd	Statewide Recycling
Orange Grove Fruit Drink	2 000 ml	LPB - Gable Top	Nippys Fruit Juices Pty Ltd	Statewide Recycling
Orange Grove Orange Fruit Drink	300 ml	PET	Nippys Fruit Juices Pty Ltd	Statewide Recycling
Orange Grove Orange Fruit Drink	500 ml	PET	Nippys Fruit Juices Pty Ltd	Statewide Recycling
SA Water Pageant Water	500 ml	PET	Nippys Fruit Juices Pty Ltd	Statewide Recycling
Still Wet Spring Water	750 ml	PET	Nippys Fruit Juices Pty Ltd	Statewide Recycling
The Fairies Bizzy Buzzy Tropical Fruit Drink	250 ml	HDPE	Nippys Fruit Juices Pty Ltd	Statewide Recycling
The Fairies Fairy Water	350 ml	PET	Nippys Fruit Juices Pty Ltd	Statewide Recycling
The Fairies Giggle Drink Raspberry	250 ml	HDPE	Nippys Fruit Juices Pty Ltd	Statewide Recycling
V Energy Drink	250 ml	Can	Nippys Fruit Juices Pty Ltd	Statewide Recycling
V Energy Drink	350 ml	Glass	Nippys Fruit Juices Pty Ltd	Statewide Recycling
Aussie Springs Natural Spring Water	600 ml	PET	Nonnas Nibbles Pty Ltd	Statewide Recycling
A Bottle of Water	350 ml	PET	Nu Pure Beverages Pty Ltd	Statewide Recycling
A Bottle of Water	600 ml	PET	Nu Pure Beverages Pty Ltd	Statewide Recycling
A Bottle of Water	1 500 ml	PET	Nu Pure Beverages Pty Ltd	Statewide Recycling
A Bottle of Water Pure Spring Water	600 ml	PET	Nu Pure Beverages Pty Ltd	Statewide Recycling
A Bottle of Water Pure Spring Water	1 500 ml	PET	Nu Pure Beverages Pty Ltd	Statewide Recycling
Aqua Organic Premium Spring Water	600 ml	PET	Nu Pure Beverages Pty Ltd	Statewide Recycling
Aqua Organic Premium Spring Water	1 500 ml	PET	Nu Pure Beverages Pty Ltd	Statewide Recycling
Australian Red Cross Blood Service Saving Lives I'll Drink To That	600 ml	PET	Nu Pure Beverages Pty Ltd	Statewide Recycling
Bomba Blueberry Energy Drink	250 ml	Glass	Nu Pure Beverages Pty Ltd	Statewide Recycling
Bomba Orange Energy Drink	250 ml	Glass	Nu Pure Beverages Pty Ltd	Statewide Recycling
Bomba Yellow Classic Energy Drink	250 ml	Can - Aluminium	Nu Pure Beverages Pty Ltd	Statewide Recycling
Bomba Yellow Classic Energy Drink	250 ml	Glass	Nu Pure Beverages Pty Ltd	Statewide Recycling
DIY Vitamin Water Recover Mixed Berry Zero Sugar	620 ml	PET	Nu Pure Beverages Pty Ltd	Statewide Recycling
DIY Vitamin Water Refresh Lime & Vanilla Zero Sugar	620 ml	PET	Nu Pure Beverages Pty Ltd	Statewide Recycling
DIY Vitamin Water Revive Grape & Kiwi Zero Sugar	620 ml	PET	Nu Pure Beverages Pty Ltd	Statewide Recycling
Foodworks Best Buy Pure Spring Water	1 500 ml	PET	Nu Pure Beverages Pty Ltd	Statewide Recycling
Foodworks Best Buy Pure Spring Water Sipper	600 ml	PET	Nu Pure Beverages Pty Ltd	Statewide Recycling
Foodworks Best Buy Pure Spring Water Sipper	1 000 ml	PET	Nu Pure Beverages Pty Ltd	Statewide Recycling
Gloria Jeans Water for Water	600 ml	PET	Nu Pure Beverages Pty Ltd	Statewide Recycling
High Low Pure Spring Water	600 ml	PET	Nu Pure Beverages Pty Ltd	Statewide Recycling
Kirkland Signature Natural Spring Water	500 ml	PET	Nu Pure Beverages Pty Ltd	Statewide Recycling
Northbrook Natural Australian Spring Water	250 ml	PET	Nu Pure Beverages Pty Ltd	Statewide Recycling
Nu Pure Lightly Sparkling Pure Spring Water Dragonfruit	500 ml	PET	Nu Pure Beverages Pty Ltd	Statewide Recycling

Column 1	Column 2	Column 3	Column 4	Column 5
Product Name	Container Size	Container Type	Approval Holder	Collection Arrangements
Nu Pure Lightly Sparkling Pure Spring Water Pineapple Coconut	500 ml	PET	Nu Pure Beverages Pty Ltd	Statewide Recycling
Nu Pure Spring Water	350 ml	PET	Nu Pure Beverages Pty Ltd	Statewide Recycling
Nu Pure Spring Water	3 000 ml	PET	Nu Pure Beverages Pty Ltd	Statewide Recycling
Nu Pure Spring Water	1 000 ml	PET	Nu Pure Beverages Pty Ltd	Statewide Recycling
Nu Pure Vita Sparkling Tangerine & Passionfruit	500 ml	PET	Nu Pure Beverages Pty Ltd	Statewide Recycling
Nu Pure lightly Sparkling Pure Spring Water	250 ml	Can - Aluminium	Nu Pure Beverages Pty Ltd	Statewide Recycling
Pure Natural Mineral Water Sparkling	500 ml	Glass	Nu Pure Beverages Pty Ltd	Statewide Recycling
Re Nu Lemon Lime Splash Fruit Flavoured Spring Water	600 ml	PET	Nu Pure Beverages Pty Ltd	Statewide Recycling
Re Nu Lemon Lime Splash Fruit Flavoured Spring Water	350 ml	PET	Nu Pure Beverages Pty Ltd	Statewide Recycling
Re Nu Pine Mango Pash Splash Fruit Flavoured Spring Water	600 ml	PET	Nu Pure Beverages Pty Ltd	Statewide Recycling
Re Nu Pine Mango Pash Splash Fruit Flavoured Spring Water	350 ml	PET	Nu Pure Beverages Pty Ltd	Statewide Recycling
Re Nu Raspberry Blueberry Splash Fruit Flavoured Spring Water	600 ml	PET	Nu Pure Beverages Pty Ltd	Statewide Recycling
Re Nu Raspberry Blueberry Splash Fruit Flavoured Spring Water	350 ml	PET	Nu Pure Beverages Pty Ltd	Statewide Recycling
Thankyou Water Premium Spring Water	1500 ml	PET	Nu Pure Beverages Pty Ltd	Statewide Recycling
Thankyou Water Premium Spring Water	600 ml	PET	Nu Pure Beverages Pty Ltd	Statewide Recycling
The Coffee Club Blood Orange Sparkling Flavoured Mineral Water	330 ml	Glass	Nu Pure Beverages Pty Ltd	Statewide Recycling
The Coffee Club Lime Sparkling Flavoured Mineral Water	330 ml	Glass	Nu Pure Beverages Pty Ltd	Statewide Recycling
The Coffee Club Passionfruit Sparkling Flavoured Mineral Water	330 ml	Glass	Nu Pure Beverages Pty Ltd	Statewide Recycling
The Coffee Club Pink Grapefruit Sparkling Flavoured Mineral Water	330 ml	Glass	Nu Pure Beverages Pty Ltd	Statewide Recycling
The Coffee Club Pure Spring Water	600 ml	PET	Nu Pure Beverages Pty Ltd	Statewide Recycling
The Coffee Club Sparkling Spring Water	500 ml	Glass	Nu Pure Beverages Pty Ltd	Statewide Recycling
Water Please Pure Spring Water	350 ml	PET	Nu Pure Beverages Pty Ltd	Statewide Recycling
Water Please Pure Spring Water	750 ml	PET	Nu Pure Beverages Pty Ltd	Statewide Recycling
Water Please Pure Spring Water	500 ml	PET	Nu Pure Beverages Pty Ltd	Statewide Recycling
drinkup all natural spring water	1 500 ml	PET	Nu Pure Beverages Pty Ltd	Statewide Recycling
drinkup all natural spring water	1 000 ml	PET	Nu Pure Beverages Pty Ltd	Statewide Recycling
drinkup all natural spring water	620 ml	PET	Nu Pure Beverages Pty Ltd	Statewide Recycling
Swirlit	200 ml	PET	Oral Health Innovations Pty Ltd	Statewide Recycling
Pressed Juices Almond Mylk	470 ml	PET	Pressed Juices Retail Pty Ltd	Statewide Recycling
Pressed Juices Antiox 2	470 ml	PET	Pressed Juices Retail Pty Ltd	Statewide Recycling
Pressed Juices Antiox 3	470 ml	PET	Pressed Juices Retail Pty Ltd	Statewide Recycling
Pressed Juices Banana Salted Caramel	470 ml	PET	Pressed Juices Retail Pty Ltd	Statewide Recycling
Pressed Juices Berry Glow 2	470 ml	PET	Pressed Juices Retail Pty Ltd	Statewide Recycling
Pressed Juices Berry Glow 3	470 ml	PET	Pressed Juices Retail Pty Ltd	Statewide Recycling
Pressed Juices Burnt Toffee Banana Split	470 ml	PET	Pressed Juices Retail Pty Ltd	Statewide Recycling
Pressed Juices Chocolate Almond Mylk	470 ml	PET	Pressed Juices Retail Pty Ltd	Statewide Recycling
Pressed Juices Clarity	470 ml	PET	Pressed Juices Retail Pty Ltd	Statewide Recycling
Pressed Juices Earth 1	470 ml	PET	Pressed Juices Retail Pty Ltd	Statewide Recycling
Pressed Juices Earth 2	470 ml	PET	Pressed Juices Retail Pty Ltd	Statewide Recycling
Pressed Juices Earth 4	470 ml	PET	Pressed Juices Retail Pty Ltd	Statewide Recycling
Pressed Juices Earth 5	470 ml	PET	Pressed Juices Retail Pty Ltd	Statewide Recycling
Pressed Juices Espresso Almond Mylk	470 ml	PET	Pressed Juices Retail Pty Ltd	Statewide Recycling
Pressed Juices Fig & Pepita Mylkshake	470 ml	PET	Pressed Juices Retail Pty Ltd	Statewide Recycling
Pressed Juices Greens 1	470 ml	PET	Pressed Juices Retail Pty Ltd	Statewide Recycling
Pressed Juices Greens 2	470 ml	PET	Pressed Juices Retail Pty Ltd	Statewide Recycling
Pressed Juices Greens 3	470 ml	PET	Pressed Juices Retail Pty Ltd	Statewide Recycling
Pressed Juices Greens 4	470 ml	PET	Pressed Juices Retail Pty Ltd	Statewide Recycling
Pressed Juices Greens 5	470 ml	PET	Pressed Juices Retail Pty Ltd	Statewide Recycling
Pressed Juices Greens 6	470 ml	PET	Pressed Juices Retail Pty Ltd	Statewide Recycling
Pressed Juices Greens 7	470 ml	PET	Pressed Juices Retail Pty Ltd	Statewide Recycling
Pressed Juices Organic Elixirs 1 Immune	100 ml	Glass	Pressed Juices Retail Pty Ltd	Statewide Recycling
Pressed Juices Organic Elixirs 2 Skin	100 ml	Glass	Pressed Juices Retail Pty Ltd	Statewide Recycling
Pressed Juices Organic Elixirs 3 Digest	100 ml	Glass	Pressed Juices Retail Pty Ltd	Statewide Recycling
Pressed Juices PJ OJ	470 ml	PET	Pressed Juices Retail Pty Ltd	Statewide Recycling
Pressed Juices Refresh 3	470 ml	PET	Pressed Juices Retail Pty Ltd	Statewide Recycling
Pressed Juices Save The Date Espresso Almond Mylk	470 ml	PET	Pressed Juices Retail Pty Ltd	Statewide Recycling
Pressed Juices Smooth Energy	470 ml	PET	Pressed Juices Retail Pty Ltd	Statewide Recycling
Pressed Juices Smooth Indulgence	470 ml	PET	Pressed Juices Retail Pty Ltd	Statewide Recycling
Pressed Juices Smooth Vitality	470 ml	PET	Pressed Juices Retail Pty Ltd	Statewide Recycling
Pressed Juices Spiced Almond Mylk	470 ml	PET	Pressed Juices Retail Pty Ltd	Statewide Recycling
Pressed Juices Strawberry Mylk	470 ml	PET	Pressed Juices Retail Pty Ltd	Statewide Recycling

Column 1	Column 2	Column 3	Column 4	Column 5
Product Name	Container Size	Container Type	Approval Holder	Collection Arrangements
Pressed Juices Tonic The Black Lemonade	470 ml	PET	Pressed Juices Retail Pty Ltd	Statewide Recycling
Pressed Juices Tonic The Pink Lemonade	470 ml	PET	Pressed Juices Retail Pty Ltd	Statewide Recycling
Pressed Juices Tonic The Slippery Elm	470 ml	PET	Pressed Juices Retail Pty Ltd	Statewide Recycling
Pressed Juices Tonic The Sour Cherry	470 ml	PET	Pressed Juices Retail Pty Ltd	Statewide Recycling
Pressed Juices Zen Berry	470 ml	PET	Pressed Juices Retail Pty Ltd	Statewide Recycling
Pressed Juices Zest 1	470 ml	PET	Pressed Juices Retail Pty Ltd	Statewide Recycling
Pressed Juices Zest 2	470 ml	PET	Pressed Juices Retail Pty Ltd	Statewide Recycling
Pressed Juices Zest 3	470 ml	PET	Pressed Juices Retail Pty Ltd	Statewide Recycling
Pressed Juices Zest 4	470 ml	PET	Pressed Juices Retail Pty Ltd	Statewide Recycling
Pressed Juices Zing 1	470 ml	PET	Pressed Juices Retail Pty Ltd	Statewide Recycling
Pressed Juices Zing 3	470 ml	PET	Pressed Juices Retail Pty Ltd	Statewide Recycling
Police Health Premium Pure Drinking Water	600 ml	PET	Quality Promo Products	Flagcan Distributors
System LS Energy Liquid Shot Citrus	75 ml	PET	Rapid Nutrition Pty Ltd	Statewide Recycling
32 Admiral Scottish Red	750 ml	Glass	Rio Coffee Pty Ltd	Statewide Recycling
32 Atra	750 ml	Glass	Rio Coffee Pty Ltd	Statewide Recycling
32 Audace	750 ml	Glass	Rio Coffee Pty Ltd	Statewide Recycling
32 Curmi	750 ml	Glass	Rio Coffee Pty Ltd	Statewide Recycling
32 Nebra Amber Beer	750 ml	Glass	Rio Coffee Pty Ltd	Statewide Recycling
32 Oppale	750 ml	Glass	Rio Coffee Pty Ltd	Statewide Recycling
32 Tre+Due	500 ml	Glass	Rio Coffee Pty Ltd	Statewide Recycling
Birra Lurisa 8	330 ml	Glass	Rio Coffee Pty Ltd	Statewide Recycling
Birra Lurisia 10	750 ml	Glass	Rio Coffee Pty Ltd	Statewide Recycling
Birra Lurisia 6	330 ml	Glass	Rio Coffee Pty Ltd	Statewide Recycling
Birra Lurisia 6	750 ml	Glass	Rio Coffee Pty Ltd	Statewide Recycling
Birra Lurisia 6	330 ml	Glass	Rio Coffee Pty Ltd	Statewide Recycling
Birra Lurisia 8	750 ml	Glass	Rio Coffee Pty Ltd	Statewide Recycling
Birra Lurisia 8	330 ml	Glass	Rio Coffee Pty Ltd	Statewide Recycling
Crodino Ginger	100 ml	Glass	Rio Coffee Pty Ltd	Statewide Recycling
Crodo Liseal Natural Spring Water	500 ml	Plastic	Rio Coffee Pty Ltd	Statewide Recycling
Crodo Liseal Natural Spring Water	1 500 ml	Plastic	Rio Coffee Pty Ltd	Statewide Recycling
Fever Tree Elderflower Tonic	200 ml	Glass	Rio Coffee Pty Ltd	Statewide Recycling
Fever Tree Ginger Beer	500 ml	Glass	Rio Coffee Pty Ltd	Statewide Recycling
Fever Tree Naturally Light Indian Tonic Water	200 ml	Glass	Rio Coffee Pty Ltd	Statewide Recycling
Fever Tree Premium Ginger Ale	200 ml	Glass	Rio Coffee Pty Ltd	Statewide Recycling
Fever Tree Premium Ginger Beer	200 ml	Glass	Rio Coffee Pty Ltd	Statewide Recycling
Fever Tree Premium Indian Tonic Water	200 ml	Glass	Rio Coffee Pty Ltd	Statewide Recycling
Fever Tree Premium Lemon	200 ml	Glass	Rio Coffee Pty Ltd	Statewide Recycling
Fever Tree Premium Lemon Tonic	200 ml	Glass	Rio Coffee Pty Ltd	Statewide Recycling
Fever Tree Premium Lemonade	200 ml	Glass	Rio Coffee Pty Ltd	Statewide Recycling
Fever Tree Spring Soda Water	200 ml	Glass	Rio Coffee Pty Ltd	Statewide Recycling
Fever Tree Tonic	500 ml	Glass	Rio Coffee Pty Ltd	Statewide Recycling
Moretti Baffo Doro	600 ml	Glass	Rio Coffee Pty Ltd	Statewide Recycling
Moretti Originale	660 ml	Glass	Rio Coffee Pty Ltd	Statewide Recycling
Nasto Azzurro Beer	660 ml	Glass	Rio Coffee Pty Ltd	Statewide Recycling
Natures Organic Apple	350 ml	Glass	Rio Coffee Pty Ltd	Statewide Recycling
Natures Organic Apple & Blackcurrant	350 ml	Glass	Rio Coffee Pty Ltd	Statewide Recycling
Natures Organic Apple & Guava	350 ml	Glass	Rio Coffee Pty Ltd	Statewide Recycling
Natures Organic Mango & Banana Smoothie	350 ml	Glass	Rio Coffee Pty Ltd	Statewide Recycling
Natures Organic Orange	350 ml	Glass	Rio Coffee Pty Ltd	Statewide Recycling
Natures Organic Pineapple	350 ml	Glass	Rio Coffee Pty Ltd	Statewide Recycling
Peroni	330 ml	Glass	Rio Coffee Pty Ltd	Statewide Recycling
Peroni Beer	660 ml	Glass	Rio Coffee Pty Ltd	Statewide Recycling
Skipper ACE	1 000 ml	LPB - Aseptic	Rio Coffee Pty Ltd	Statewide Recycling
Skipper Arancia Rossa	1 000 ml	LPB - Aseptic	Rio Coffee Pty Ltd	Statewide Recycling
Skipper Kiwi & Apple	1 000 ml	LPB - Aseptic	Rio Coffee Pty Ltd	Statewide Recycling
Tappo Apple Cider	330 ml	Glass	Rio Coffee Pty Ltd	Statewide Recycling
Tappo Pear Cider	330 ml	Glass	Rio Coffee Pty Ltd	Statewide Recycling
The Rocchetta Green Tea	1 500 ml	PET	Rio Coffee Pty Ltd	Statewide Recycling
The Rocchetta Lemon Tea	1 500 ml	PET	Rio Coffee Pty Ltd	Statewide Recycling
The Rocchetta Peach Tea	1 500 ml	PET	Rio Coffee Pty Ltd	Statewide Recycling
VIS Lager	330 ml	Glass	Rio Coffee Pty Ltd	Statewide Recycling
VIS Wheat Beer	330 ml	Glass	Rio Coffee Pty Ltd	Statewide Recycling
Zuegg Skipper 100% Apple	200 ml	Glass	Rio Coffee Pty Ltd	Statewide Recycling
Zuegg Skipper 100% Brasil	200 ml	Glass	Rio Coffee Pty Ltd	Statewide Recycling
Zuegg Skipper 100% Grapefruit	200 ml	Glass	Rio Coffee Pty Ltd	Statewide Recycling
Zuegg Skipper 100% Orange	200 ml	Glass	Rio Coffee Pty Ltd	Statewide Recycling
Zuegg Skipper 100% Pineapple	200 ml	Glass	Rio Coffee Pty Ltd	Statewide Recycling
Zuegg Skipper ACE	200 ml	Glass	Rio Coffee Pty Ltd	Statewide Recycling
Zuegg Skipper Apricot	200 ml	Glass	Rio Coffee Pty Ltd	Statewide Recycling
Zuegg Skipper Blood Orange	200 ml	Glass	Rio Coffee Pty Ltd	Statewide Recycling
Zuegg Skipper Kiwi and Apple	200 ml	Glass	Rio Coffee Pty Ltd	Statewide Recycling
Zuegg Skipper Peach	200 ml	Glass	Rio Coffee Pty Ltd	Statewide Recycling

Column 1	Column 2	Column 3	Column 4	Column 5
Product Name	Container Size	Container Type	Approval Holder	Collection Arrangements
Zuegg Skipper Pear	200 ml	Glass	Rio Coffee Pty Ltd	Statewide Recycling
Addlestons Premium Cloudy Cider	500 ml	Glass	Robert Oatley Vineyards Pty Ltd	Marine Stores Ltd
Anchor Brewing Co Liberty Ale	355 ml	Glass	Robert Oatley Vineyards Pty Ltd	Marine Stores Ltd
Anchor Californian Lager	355 ml	Glass	Robert Oatley Vineyards Pty Ltd	Marine Stores Ltd
Anchor IPA	355 ml	Glass	Robert Oatley Vineyards Pty Ltd	Marine Stores Ltd
Anchor Porter	355 ml	Glass	Robert Oatley Vineyards Pty Ltd	Marine Stores Ltd
Anchor Steam Beer	355 ml	Glass	Robert Oatley Vineyards Pty Ltd	Marine Stores Ltd
Anchor Summer Ale	355 ml	Glass	Robert Oatley Vineyards Pty Ltd	Marine Stores Ltd
Woodchuck Amber Hard Cider	355 ml	Glass	Robert Oatley Vineyards Pty Ltd	Marine Stores Ltd
Galway Vintage Shiraz	187 ml	PET	Samuel Smith & Son Pty Ltd	Statewide Recycling
Moo Brew Dark Ale	375 ml	Can - Aluminium	Samuel Smith & Son Pty Ltd	Statewide Recycling
Moo Brew Dark Ale	330 ml	Glass	Samuel Smith & Son Pty Ltd	Statewide Recycling
Moo Brew Hefeweizen	330 ml	Glass	Samuel Smith & Son Pty Ltd	Statewide Recycling
Moo Brew Hefeweizen	375 ml	Can - Aluminium	Samuel Smith & Son Pty Ltd	Statewide Recycling
Moo Brew IPA	375 ml	Can - Aluminium	Samuel Smith & Son Pty Ltd	Statewide Recycling
Moo Brew Mid Strength	375 ml	Can - Aluminium	Samuel Smith & Son Pty Ltd	Statewide Recycling
Moo Brew Pale Ale	375 ml	Can - Aluminium	Samuel Smith & Son Pty Ltd	Statewide Recycling
Moo Brew Pale Ale	330 ml	Glass	Samuel Smith & Son Pty Ltd	Statewide Recycling
Moo Brew Pilsner	330 ml	Glass	Samuel Smith & Son Pty Ltd	Statewide Recycling
Moo Brew Pilsner	375 ml	Can - Aluminium	Samuel Smith & Son Pty Ltd	Statewide Recycling
Moo Brew Session Ale	375 ml	Can - Aluminium	Samuel Smith & Son Pty Ltd	Statewide Recycling
Moo Brew Single Hop	440 ml	Can - Aluminium	Samuel Smith & Son Pty Ltd	Statewide Recycling
Moo Brew Stout	375 ml	Can - Aluminium	Samuel Smith & Son Pty Ltd	Statewide Recycling
Moo Brew Untropical Island IPA	375 ml	Can - Aluminium	Samuel Smith & Son Pty Ltd	Statewide Recycling
Napoleone & Co Apple Cider	330 ml	Glass	Samuel Smith & Son Pty Ltd	Statewide Recycling
Napoleone & Co Cider Apple with Pear	500 ml	Glass	Samuel Smith & Son Pty Ltd	Statewide Recycling
Napoleone & Co Methode Traditionnelle Pear Cider	500 ml	Glass	Samuel Smith & Son Pty Ltd	Statewide Recycling
Napoleone & Co Pear Cider	330 ml	Glass	Samuel Smith & Son Pty Ltd	Statewide Recycling
Napoleone Cider Apple with Pear	330 ml	Glass	Samuel Smith & Son Pty Ltd	Statewide Recycling
Napoleone Cider Methode Traditionnelle Apple	500 ml	Glass	Samuel Smith & Son Pty Ltd	Statewide Recycling
Paulaner Hefe Weizen Natural Wheat	330 ml	Glass	Samuel Smith & Son Pty Ltd	Statewide Recycling
Paulaner Oktoberfest Bier	500 ml	Glass	Samuel Smith & Son Pty Ltd	Statewide Recycling
Paulaner Oktoberfest Bier	1 000 ml	Can - Aluminium	Samuel Smith & Son Pty Ltd	Statewide Recycling
Paulaner Original Munich Premium Lager	330 ml	Glass	Samuel Smith & Son Pty Ltd	Statewide Recycling
Paulaner Premium Pils	330 ml	Glass	Samuel Smith & Son Pty Ltd	Statewide Recycling
Salzburger Stiegl Beer	330 ml	Glass	Samuel Smith & Son Pty Ltd	Statewide Recycling
Y Series Unwooded Chardonnay	187 ml	PET	Samuel Smith & Son Pty Ltd	Statewide Recycling
Coles 100% Organic Coconut Water	250 ml	PVC	Simple Foods Pty Ltd	Statewide Recycling
UFC Refresh Coconut Water	500 ml	LPB - Aseptic	Suchmo Imports Pty Ltd	Statewide Recycling
Qiulin Kvass	330 ml	Can - Aluminium	TXZ trading Pty Ltd	Statewide Recycling
M For Mollie Grape	355 ml	Can - Aluminium	The Spurs Wine Company	Statewide Recycling
Sting Energy Drink	330 ml	Can - Aluminium	Thuan Phat Supermarket	Marine Stores Ltd
Aussie Natural Spring Water	600 ml	PET	West Coast Spring Water Pty Ltd T/as Aussie Natural	Statewide Recycling
Betoota Bitter	375 ml	Can - Aluminium	Yulli's Brews	Statewide Recycling

FISHERIES MANAGEMENT ACT 2007

SECTION 44

Management Plan for the South Australian Commercial Spencer Gulf Prawn Fishery

TAKE notice that pursuant to Section 44(9) and (10) of the *Fisheries Management Act 2007* I hereby declare that I have adopted the Management Plan for the South Australian Commercial Spencer Gulf Prawn Fishery 2020 and fix 24 October 2020 as the date of on which the plan will take effect.

Dated: 14 October 2020

HON DAVID BASHAM MP
Minister for Primary Industries and Regional Development

FISHERIES MANAGEMENT ACT 2007

SECTION 115

Ministerial Exemption Number ME9903118

TAKE NOTICE that pursuant to section 115 of the *Fisheries Management Act 2007*, Dr Nick Whiterod of Nature Glenelg Trust, 16 Anglesea Road, Victor Harbor, South Australia, 5211 (the "exemption holder"), or a person acting as his agent, is exempt from sections 70, and 71 of the *Fisheries Management Act 2007*; and regulations 5 and clauses 38, 39, 40, 41, 42, 43, 44, 72, 74 and 96 of Schedule 6 of the *Fisheries Management (General) Regulations 2017*, but only insofar as the exemption holder may engage in the targeting of aquatic resources from waters specified in Schedule 1, using the gear specified in Schedule 2 (the 'exempted activity'), subject to the conditions specified in Schedule 3 from 20 October 2020 until 19 October 2021 unless otherwise varied or revoked earlier.

SCHEDULE 1

Inland, estuarine and coastal waters of the State excluding Aquatic Reserves, Marine Park sanctuary zones and restricted access zones (unless authorised under the *Marine Parks Act 2007*).

SCHEDULE 2

- 5x Seine nets (maximum length of 25m, minimum mesh size of 2mm)
- 20x Fyke nets (maximum wing span of 5m, minimum mesh size of 2mm)
- 40x Munyana nets (Minimum 10cm entrance, minimum mesh size of 12mm)
- 20x Hoop nets (minimum 10cm entrance, minimum 12mm mesh)
- 20x Pyramid traps (50mm mesh)
- 1x Backpack electrofisher (Smith-Root LR24)
- 1x Boat electrofisher (Smith-Root 5.0 kW GPP)

SCHEDULE 3

1. Subject to conditions 2 and 3, fish sampled pursuant to this notice must be returned to the water as soon as reasonably practicable on completion of scientific evaluation.
2. A total of 30 Common Galaxias (*Galaxias maculatus*) and 20 Climbing Galaxias (*Galaxias brevipinnis*) may be taken under this exemption. Excluding protected species, up to an additional ten fish may be retained for the purpose of identification pursuant to this notice.
3. All noxious fish collected must be destroyed and disposed of appropriately.
4. The specimens collected are for scientific and research purposes only and must not be sold.
5. The following persons are authorised to act as agents under this exemption:

• Dr Sylvia Zukowski	• Dr Lauren Brown	• Jonathan Tuck
• Dr Ruan Gannon	• Dr Lachlan Farrington	• Nicole Mojonnier
• Cory Young	• Jarrod Kean	• Jess Bouchier
• Peter Unmack	• Bryan Haywood	• Lu-Wei Spinks
• Dr Mike Hammer		
6. The exemption holder must operate in accordance to the *Australian Code of Electrofishing Practice 1997* requirements to the extent that it relates to the exempted activity.
7. Before conducting the exempted activity, the exemption holder must contact PIRSA FISHWATCH on 1800 065 522 and answer a series of questions about the exempted activity and be able to provide information about the area and time of the exempted activity, the vehicles and/or boats involved, the number of agents undertaking the exempted activity and other related issues.
8. The exemption holder must provide a report in writing detailing the outcomes of the research and the collection of organisms pursuant to this notice to the Executive Director PIRSA Fisheries and Aquaculture, (GPO Box 1625, ADELAIDE SA 5001) within 2 weeks of completion of the last activity to occur under this notice or within 2 weeks of the expiry of this notice, whichever occurs first, giving the following details:
 - the date and location of sampling;
 - the number of and types of nets used;
 - the description of all species collected (fish, invertebrates, turtles) for purposes of identification;
 - the number of each species collected.
9. While engaging in the exempted activity, the exemption holder or a person acting as their agent must be in possession of a copy of this notice. Such notice must be produced to a Fisheries Officer if requested.
10. The exemption holder must not contravene or fail to comply with the *Fisheries Management Act 2007* or any regulations made under that Act, except where specifically exempted by this notice or any other notice issued under that Act.

This notice does not purport to override the provisions or operation of any other Act including, but not limited to, the *River Murray Act 2003*. The exemption holder and his agents must comply with any relevant regulations, permits, requirements and directions.

Dated: 19 October 2020

PROF GAVIN BEGG
A/Executive Director
Fisheries and Aquaculture

Delegate of the Minister for Primary Industries and Regional Development

FISHERIES MANAGEMENT (PRAWN FISHERIES) REGULATIONS 2017

Surveying in the Spencer Gulf Prawn Fishery

TAKE notice that pursuant to Regulation 10 of the *Fisheries Management (Prawn Fisheries) Regulations 2017* the notice dated 8 October 2020 on page 4861 of the *South Australian Government Gazette* of 15 October 2020, prohibiting fishing activities in the Spencer Gulf Prawn Fishery is HEREBY varied such that it will not apply to the holders of a Spencer Gulf Prawn Fishery licence issued pursuant to the *Fisheries Management (Prawn Fisheries) Regulations 2017* listed in Schedule 1 or their registered master insofar as they may use prawn trawl nets in accordance with the conditions of their fishery licence for the purpose of undertaking a prawn survey during the period specified in Schedule 2, subject to the conditions contained in Schedule 3 unless this notice is varied or revoked.

SCHEDULE 1

Licence Number	Licence Holder	Boat Name
P04	Melanie B Nominees Pty Ltd	<i>Melanie B</i>
P06	Davies Nora	<i>Lunar Sea</i>
P08	Blaslov—Nelligan, Nansi	<i>Grozdana B</i>
P13	A Lukin Nominees Pty Ltd	<i>Kylie</i>
P14	Ross Hamilton Haldane	<i>Bartalumba K</i>
P15	Palmer Investment Holding Pty Ltd	<i>Millennium III</i>
P16	Jillandra Nominees Pty Ltd	<i>Night Stalker</i>
P18	Broughton Fisheries Pty Ltd	<i>Marija-L</i>
P19	Lukin Fisheries Pty Ltd	<i>Lukina</i>
P21	Spencer Gulf Nominees Pty Ltd	<i>Kylett</i>
P24	Thornhill Pty Ltd	<i>Sandy S</i>
P26	Michelle Fisheries Pty Ltd	<i>Michelle</i>
P28	Lukin and Van Doorn Pty Ltd	<i>Skandia</i>
P29	Capital Seas Pty Ltd	<i>Leila Jo</i>
P30	PQ Nominees Pty Ltd	<i>Roslyn Ann</i>
P31	Nunan Nominees Pty Ltd	<i>Evelyn L</i>
P33	Marnikol Fisheries Pty Ltd	<i>Beauie J</i>
P34	Bralic Fisheries Pty Ltd	<i>Cvita B</i>
P38	Tacoma Pty Ltd	<i>Atlas HB</i>

SCHEDULE 2

Commencing at sunset on 16 October 2020 and ending at sunrise on 30 September 2021.

SCHEDULE 3

- For the purposes of this notice the trawl survey areas cannot include any waters of a habitat protection zone or a sanctuary zone of a marine park established under the *Marine Parks Act 2007*.
- The licence holders listed in Schedule 1 or their registered master must comply with all regulations and conditions that apply to fishing activities undertaken pursuant to their licence, in addition to the conditions imposed by this notice.
- The vessels participating in a survey, either a stock assessment or spot survey, must be listed in the table attached as Table 1. Table 1 is to be completed by either the Executive Officer or the Coordinator at Sea from the Spencer Gulf and West Coast Professional Fishermen's Association and emailed to pirsa.fishwatch@sa.gov.au and the Prawn Fishery Manager at steve.shanks@sa.gov.au at least one hour prior to departure of the first vessel from port to engage in the activity permitted under this notice.
- All fish, other than King Prawns, Southern Calamari and Balmain Bugs taken during the activity permitted under this notice, are to be returned to the water immediately after capture.
- While engaged in fishing activities or unloading the survey catch, the licence holders listed in Schedule 1 or their register master must have a copy of this notice on board the boat or near his person. This notice must be produced to a Fisheries Officer if requested.
- No fishing activity may be undertaken between the prescribed times of sunrise and sunset for Adelaide (as published in the *South Australian Government Gazette*) during the period specified in Schedule 2.
- The licence holders listed in Schedule 1 or their register master must not contravene or fail to comply with the *Fisheries Management Act 2007*, or any other regulations made under that Act except where specifically exempted by this notice.
- This notice does not purport to override the provisions or operation of any other Act. The notice holder and his agents must comply with any relevant regulations, permits, requirements and directions from the Department of Environment, Water and Natural Resources when undertaking activities within a marine park.

Dated: 15 October 2020

SIMON CLARK
Executive Officer
West Coast and Spencer Gulf Prawn Fishermen's Association
Delegate of the Minister for Primary Industries and Regional Development

TABLE 1: SURVEY REPORT FOR THE SPENCER GULF PRAWN FISHERY

Required Fields	Vessel 1	Vessel 2	Vessel 3	Vessel 4	Vessel 5	Vessel 6	Vessel 7	Vessel 8	Vessel 9	Vessel 10
1. Licence prefix										
2. Licence No.										
3. Port commencing from										
4. Earliest date leaving port										
5. Earliest time leaving port										
6. Port of return										
7. Activity undertaken										
8. Name of person conducting activity										
9. Dates of trawling commencement										
10. Times of trawling										
11. Where will activity take place										

FISHERIES MANAGEMENT (PRAWN FISHERIES) REGULATIONS 2017

Variation of Spencer Gulf Prawn Fishery Licence

TAKE NOTE that pursuant to Regulation 10 of the *Fisheries Management (Prawn Fisheries) Regulations 2017*, the notice dated 8 October 2020 on page 4861 of the *South Australian Government Gazette* on 15 October 2020 prohibiting fishing activities in the Spencer Gulf Prawn Fishery, is hereby varied such that it will not be unlawful for a person fishing pursuant to a Spencer Gulf Prawn Fishery licence to use prawn trawl nets in the areas specified in Schedule 1, during the period specified in Schedule 2, and under the conditions specified in Schedule 3.

SCHEDULE 1

The waters of the Spencer Gulf Prawn Fishery:

- (a) Except the Northern Closure area, which is defined as the area north of the following index points:
1. 33°29.00 S 137°18.00 E
 2. 33°29.00 S 137°34.30 E
 3. 33°37.00 S 137°33.00 E
 4. 33°44.50 S 137°30.00 E
 5. 33°50.00 S 137°39.00 E
- (b) Except the Southern Closure area, which is defined as the waters contained within the following index points:
1. 33°41.00 S 137°06.00 E
 2. 33°56.00 S 137°18.00 E
 3. 34°13.50 S 136°56.00 E
 4. 34°36.00 S 136°44.00 E
 5. 34°36.00 S 136°34.00 E
 6. 34°05.00 S 136°48.00 E
 7. 34°03.00 S 136°51.50 E
 8. 33°52.00 S 136°40.00 E
- (c) Except the Wardang Closure area, which is defined as the waters contained within the following index points:
1. 34°10.00 S 137°28.00 E
 2. 34°21.00 S 137°12.00 E
 3. 34°45.00 S 137°15.00 E
 4. 34°48.53 S 137°09.45 E
 5. 34°48.53 S 137°06.00 E
 6. 34°50.75 S 137°06.00 E
 7. 34°54.00 S 137°01.00 E

(d) Except the Corny closure area, which is defined as the waters within and bounded by the following closure index points:

1. 34°27.00 S 136°53.00 E
2. 34°27.00 S 137°02.00 E
3. 34°35.00 S 136°56.00 E
4. 34°48.60 S 136°52.00 E
5. 34°54.00 S 136°52.00 E
6. 34°54.00 S 136°48.50 E
7. 34°49.50 S 136°48.50 E
8. 34°49.50 S 136°40.50 E
9. 34°39.50 S 136°40.50 E

Then back to point 1

(e) Except the Jurassic Park closure area, which is defined as the waters contained within the following closure index points:

1. 33°54.90 S 137°17.60 E
2. 33°54.40 S 137°19.40 E
3. 33°54.70 S 137°19.60 E
4. 33°55.20 S 137°17.80 E

Then back to point 1

(f) Except the Illusions closure area, which is defined as the waters contained within the following closure index points:

1. 33°28.8 S 137°32.2 E
2. 33°28.3 S 137°33.2 E
3. 33°28.85 S 137°33.5 E
4. 33°29.4 S 137°32.5 E

(then back to 1)

SCHEDULE 2

Commencing at sunset on 19 October 2020 and ending at sunrise on 25 October 2020.

SCHEDULE 3

1. The coordinates in Schedule 1 are defined as degrees decimal minutes and are based on the World Geodetic System 1984 (WGS 84).
2. No fishing activity may be undertaken between the prescribed times of sunrise and sunset for Adelaide (as published in the *South Australian Government Gazette* pursuant to the requirements of the *Proof of Sunrise and Sunset Act 1923*) during the period specified in Schedule 2.
3. Based on the best information available from the fleet, fishing must cease in an area in the Mid/North Gulf if the average prawn bucket count exceeds 260 prawns per 7kg; or in an area in the Southern Gulf if the average prawn bucket count exceeds 260 prawns/7kg.
4. No fishing activity may occur without the authorisation of Coordinator at Sea, Ashley Lukin, or other nominated Coordinator at Sea appointed by the Spencer Gulf and West Coast Prawn Fishermen's Association.
5. The authorisation of the Coordinator at Sea must be in writing, signed and record the day, date and permitted fishing area within the waters of Schedule 1 in the form of a notice sent to the fishing fleet or vary an earlier authorisation issued by the Coordinator at Sea.
6. The Coordinator at Sea must cause a copy of any authorisation for fishing activity or variation of same, made under this notice to be emailed to the Prawn Fisheries Manager immediately after it is made.
7. The Spencer Gulf and West Coast Prawn Fishermen's Association must keep records of all authorisations issued pursuant to this notice.

Dated: 18 October 2020

ASHLEY LUKIN
Coordinator at Sea
Spencer Gulf and West Coast Prawn Fishermen's Association
Delegate of the Minister for Primary Industries and Regional Development

GEOGRAPHICAL NAMES ACT 1991

FOR PUBLIC CONSULTATION

Notice of Intention to Alter the Boundaries of a Place

NOTICE is hereby given pursuant to the provisions of the above Act that the Attorney-General seeks public comment on a proposal to:

1. Exclude from the suburb of **PORT NOARLUNGA SOUTH** that area marked (A) shown highlighted in green on the plan and include in the suburb of **SEAFORD MEADOWS**.
2. Exclude from the suburb of **SEAFORD MEADOWS** that area marked (B) shown highlighted in orange on the plan and include in the suburb of **PORT NOARLUNGA SOUTH**.

Copies of the plan showing the extent of the subject area can be viewed at:

- the office of the Surveyor-General, 101 Grenfell Street, Adelaide
- the Land Services web-site at:

www.sa.gov.au/placenameproposals

Submissions in writing regarding this proposal may be lodged with the Surveyor-General, Attorney-General's Department, GPO Box 1354, Adelaide SA 5001, within 28 days of the publication of this notice.

Dated: 22 October 2020

MICHAEL BURDETT
Surveyor-General
Attorney-General's Department

LANDSCAPE SOUTH AUSTRALIA ACT 2019

Notice of Volume of Water Available for Allocation from the River Murray Consumptive Pool

PURSUANT to Section 121(4) of the *Landscape South Australia Act 2019* ('the Act'), I, Ben Bruce, delegate of the Minister for Environment and Water and Minister to whom the Act is committed, hereby determine the volume of water available for allocation from the River Murray Prescribed Watercourse Metropolitan Adelaide Consumptive Pool to water access entitlement holders for the period 1 July 2020 to 30 June 2021, as set out in Schedule 1 below:

SCHEDULE 1

Consumptive Pool	Classes	Volume of Water Available for Allocation	Water Access Entitlement	Water Allocation Rate as % of Nominal Maximum Water Allocation Rate of 1 kL/unit share
		kL	unit share	(%)
Metropolitan Adelaide	Class 6	130,000,000	130,000,000	100

This Notice will remain in effect until 30 June 2021, unless earlier varied.

Dated: 15 October 2020

BEN BRUCE
Executive Director, Water and River Murray
Department for Environment and Water
Delegate of the Minister for Environment and Water

LIVESTOCK ACT 1997

LIVESTOCK REGULATIONS 2013: REGULATION 3(4)

Prescribed Vaccine

PURSUANT to Regulation 3(4) of the *Livestock Regulations 2013*, I, Mary Ruth Carr, Chief Inspector of Stock, delegate of the Minister for Primary Industries and Regional Development, do hereby determine Footvax® Footrot Vaccine, a preparation capable of producing immunity in sheep to 10 serogroups of *Dichelobacter nodosus*, to be a prescribed vaccine for the purposes of these Regulations.

This Notice will remain in force until revoked by a subsequent Notice.

Dated: 6 October 2020

MARY RUTH CARR
Chief Inspector of Stock
Delegate of the Minister for Primary Industries and Regional Development

[REPUBLISHED]

The following notice under the *Major Events Act 2013*, published in the *South Australian Government Gazette* No. 81 on 15 October 2020, on page 4865, being the first notice on that page, was published with a missing item and should be replaced with the following:

MAJOR EVENTS ACT 2013

SECTION 6B

Major Event Declaration

PURSUANT to section 6B of the *Major Events Act 2013*, I, Hon Steven Marshall MP, Premier of South Australia declare the 2020 National Pharmacies Christmas Pageant to be held on 14 November 2020 to be declared a major event.

By virtue of the provisions of the *Major Events Act 2013*, I do hereby:

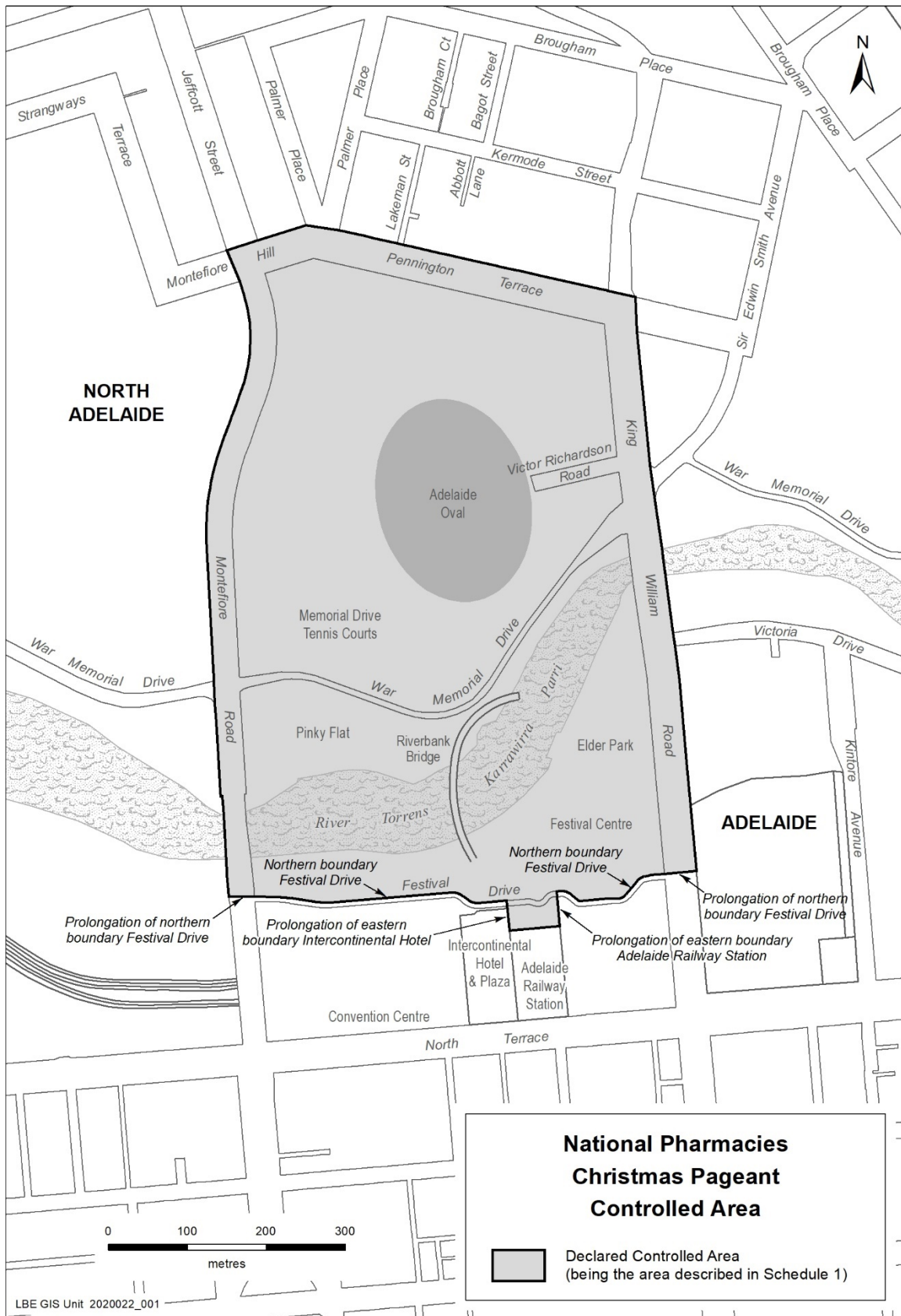
1. Specify the period for the event, being 14 November 2020 from midday to midnight.
2. Declare the major event venue to be Adelaide Oval.
3. Specify an area bounded by Festival Drive, King William Road, Pennington Terrace, Montefiore Hill and Montefiore Road as a controlled area in relation to the event.
4. Designate the South Australian Tourism Commission to be the event organiser for the event.
5. Apply section 8 of the Major Events Act to the event.
6. Apply section 10 of the Major Events Act to the event.
7. Apply section 11 of the Major Events Act to the event.
8. Apply section 12 of the Major Events Act to the event.
9. Apply section 13 of the Major Events Act to the event.
10. Apply section 14 of the Major Events Act to the event by specifying the official title as *2020 National Pharmacies Christmas Pageant* and the official logo as it appears below.



Dated: 22 October 2020

HON STEVEN MARSHALL MP
Premier of South Australia

MAP OF CONTROLLED AREA FOR THE 2020 NATIONAL PHARMACIES CHRISTMAS PAGEANT



[REPUBLISHED]

The following notice under the *Major Events Act 2013*, published in the *South Australian Government Gazette* No. 81 on 15 October 2020, on page 4865, being the second notice on that page, was published with a missing item and should be replaced with the following:

MAJOR EVENTS ACT 2013

SECTION 6B

Major Event Declaration

PURSUANT to section 6B of the *Major Events Act 2013*, I, Hon Steven Marshall MP, Premier of South Australia declare the 2020 NRL State of Origin Game One to be held on 4 November 2020 to be declared a major event.

By virtue of the provisions of the *Major Events Act 2013*, I do hereby:

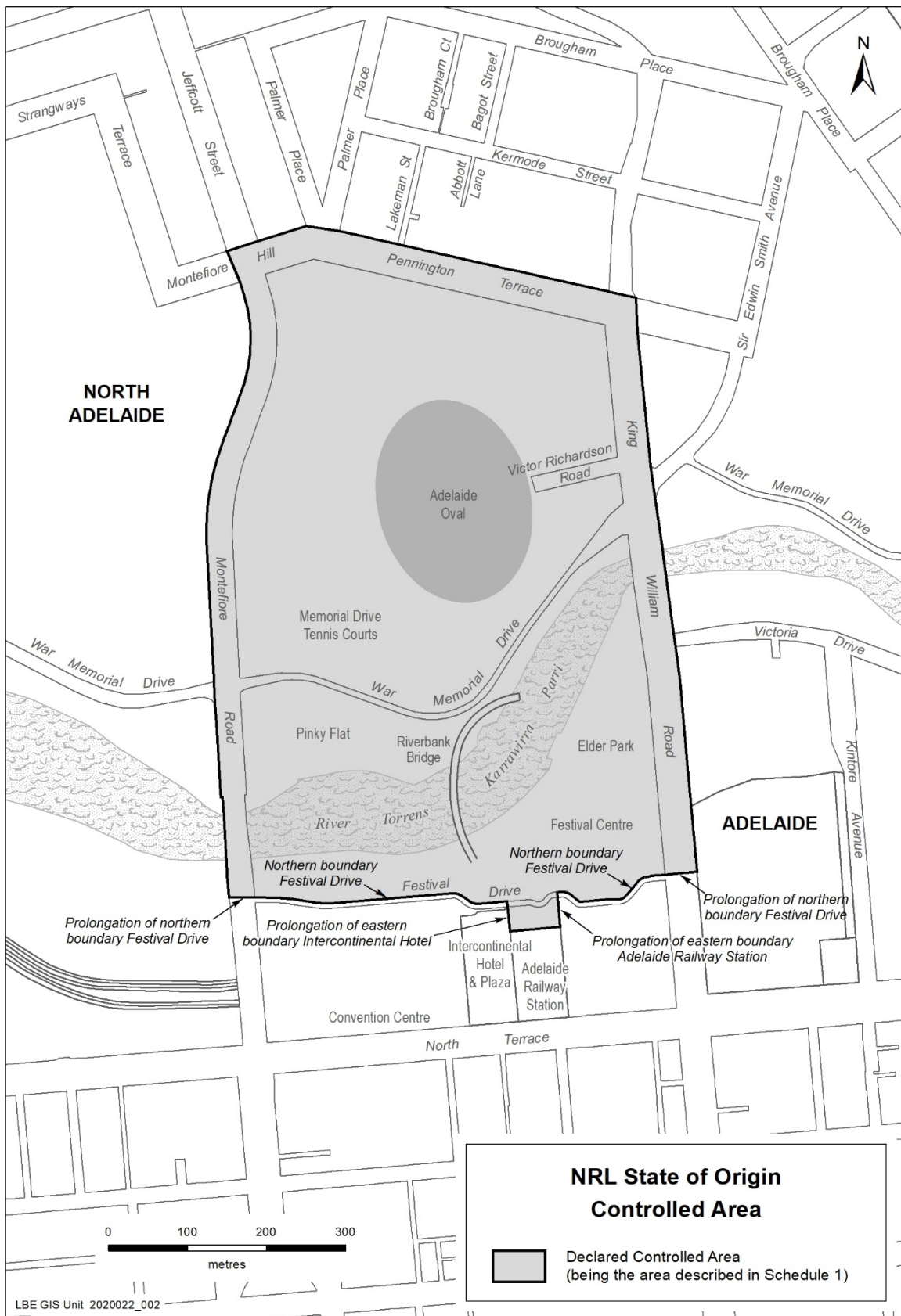
1. Specify the period for the event, being 4 November 2020.
2. Declare the major event venue to be Adelaide Oval.
3. Specify an area bounded by Festival Drive, King William Road, Pennington Terrace, Montefiore Hill and Montefiore Road as a controlled area in relation to the event.
4. Designate the NRL to be the event organiser for the event.
5. Apply section 8 of the Major Events Act to the event.
6. Apply section 10 of the Major Events Act to the event.
7. Apply section 11 of the Major Events Act to the event.
8. Apply section 12 of the Major Events Act to the event.
9. Apply section 13 of the Major Events Act to the event.
10. Apply section 14 of the Major Events Act to the event by specifying the official title as *State of Origin 2020* and the official logo as it appears below.



Dated: 22 October 2020

HON STEVEN MARSHALL MP
Premier of South Australia

MAP OF CONTROLLED AREA FOR THE 2020 NRL STATE OF ORIGIN GAME ONE



MINING ACT 1971

NOTICE is hereby given in accordance with Regulation 65(7) of the *Mining Regulations 2011*, determining the format of and minimum information required to be provided in a program for environment protection and rehabilitation (PEPR) for exploration in-situ recovery (ISR) operations on an exploration licence (EL) and mineral claim (MC).

1. GENERAL INFORMATION**1.1 Criteria for use**

The maximum approval period for exploration PEPRs (EPEPR) submitted in accordance with this determination is 12 months. This determination is to be used when developing a PEPR for exploration ISR operations that meet the following criteria:

- Are undertaken for the purpose of establishing the extent of a mineral deposit for all minerals amenable to ISR other than uranium; and
- involve no fixed surface infrastructure; and
- involve no more than three test locations, only 1 of which can be active with un-remediated groundwater (i.e. location has not undergone active groundwater remediation) at any time;
- involves the construction and/or utility of no more than 15 operational injection/extraction wells in total; and
- involves single tests of no longer than three months duration from commencement of the test to commencement of groundwater remediation; and
- can be effectively rehabilitated within 12 months of the commencement of operations; and
- will result in negligible impact to the environment following remediation.

1.2 General details

Provide general details of the proposal including:

- tenement number(s);
- tenement holder(s) name;
- operating company (name, address and contact details);
- contact person(s) (phone, email, qualifications/job title) responsible for preparation of the EPEPR and person(s) (or contractor if applicable) in charge of field supervision and implementing compliance monitoring requirements (including details of experience, qualifications etc.);
- proposed start and end dates of the program (for 12-month approval period only);
- location details and 1:250 000 scale map sheet for the proposed program, including a general locality plan indicating the proposed activity in relation to tenement and landowner boundaries, and areas with environmental classifications or sensitivities;
- description of the project, including a general summary of all the elements of the proposed program, together with the commodity type and mineralisation model.

Note: All rehabilitation is to be completed within 3 months after the expiry of the 12-month approval period.

2. PROGRAM PREPARATION AND ACCESS TO LAND**2.1 Work undertaken in preparing the proposal**

Summarise the research and fieldwork undertaken in preparing the proposal including:

- desktop reviews of existing information;
- field visits for reconnaissance and landowner consultation purposes;
- contractor consultation (i.e. equipment scale, type);
- other information used when planning the proposed program.

2.2 Land ownership, use and tenure

Provide a description of:

- land ownership and tenure within the project area;
- the current land use within and surrounding the project area;
- the zoning as defined by relevant council (or out of council) development plans;
- any policies relevant to the project area, including council wide, zone specific and sub areas within a zone;
- known plans for future land use changes by other parties;
- a statement as to whether the application area falls within the Murray Darling Basin, Adelaide Dolphin Sanctuary or a Marine Park; and
- any other interests or restrictions on the application area, including:
 - if the application is within land used for defence purposes, including the Woomera Prohibited Area or the Cultana Army Training Area;
 - any applicable exempt land under Section 9 of the *Mining Act 1971*, and any waivers of exemption obtained, and/or information on the status of waivers of exemption yet to be negotiated/finalised under Section 9AA of the *Mining Act 1971*; and

Provide information relating to the prospect of obtaining access to land required for the proposed operation.

2.3 Landowner details and consultation (r. 65(1)(c))

This section must provide relevant landowner details, including occupier and land manager details, and summarise the results of consultation that has been undertaken on the proposed operation and development of the EPEPR (including submission of statutory forms). The summary should list:

- individual or group of similarly affected persons;
- type of interested or affected party (resident, council, government agency etc.);
- any concerns/issues raised;
- response to any concerns/issues raised;
- if any individual or group of similar affected persons were not able to be consulted, what steps were taken to consult with them;
- any additional land access approvals/permits required to conduct the proposed exploration program.

Where EPEPRs are submitted in accordance with Section 1.2, consultation with all stakeholders at the EPEPR submission stage may not be practicable. If so, a plan must be provided demonstrating how the above requirements will be achieved.

2.4 Native title

Provide the following information:

- indicate if the proposed area of exploration occurs within native title land (as defined in the *Native Title (South Australia) Act 1994*);
- identify if any registered native title claimants occur in the area;
- describe how you have complied with the requirements of part 9B of the *Mining Act 1971*.

3. DESCRIPTION OF THE ENVIRONMENT (r. 65(1)(a))

Each of the elements of the environment must be described only to the extent that they may need to be considered in assessing the potential impacts of the proposed operations. If the element is not likely to be affected by the operation, a statement to that effect must be included.

Where possible, photographs and other relevant information obtained during site visits should be used when describing relevant environmental aspects.

3.1 Proximity to infrastructure and housing

Information is required to determine if existing infrastructure (both public and private) may be affected by the program, and to determine the extent of impact on the public (e.g. traffic, noise, dust etc). The following information is required:

- settlements—indicate the name and distance of the nearest town, and distance to houses and homesteads from the proposed exploration activity;
- roads and tracks—indicate existing fence lines, roads and tracks, including those which are to be used in the exploration program;
- other human infrastructure such as schools, hospitals, commercial or industrial sites, roads, sheds, bores, dams, ruins, pumps, scenic lookouts;
- railway lines, transmission lines, gas and water pipelines, communication lines (e.g. fibre optic cables) etc. if these may be impacted by the exploration activity.

Provide this information on a locality plan, where possible.

3.2 Landform and topography

Describe the topography of the general area affected by the exploration program. Include the susceptibility to erosion and visual attributes (steep or undulating slopes, plains, rocky outcrops, dunes, salt pans, clay pans, etc.).

3.3 Soil and surface cover

Describe the soil types and surface cover (e.g. gibber, rocky) in the general area affected by the exploration program. Include the susceptibility to compaction, erosion, dust, runoff and any other aspects that may be an issue for disturbance and rehabilitation.

3.4 Hydrology

Provide a description and map of the surface water hydrology of the exploration program area, and description in context of the surface water catchment area, including:

- rainfall—long-term annual and monthly rainfall patterns, high-intensity rainfall events (1 in 100, for example) to address flooding risks;
- surface water features, including drainage lines, watercourses and dams;
- potential runoff from site and/or flow in drainage lines;
- where the site is located on a drainage line/watercourse or hydrologically connected (or directly draining) to a drainage line/watercourse, describe the flow regime (i.e. frequency, duration and timing of flow events in the drainage line/watercourse).
- surface water—groundwater interactions (e.g. permanent/semi-permanent pools across the drainage lines/watercourses); and
- identify whether the area is within any water protection areas defined under the *River Murray Act 2003*, or any prescribed watercourse, or surface water areas under the *Landscape South Australia Act 2019*.

3.5 Groundwater

Provide:

- a description of the local and regional hydrogeology, detailing both the stratigraphy and hydrostratigraphy;
- a detailed baseline description of the groundwater characteristics and flow dynamics which includes:
 - baseline groundwater hydrochemistry, including any seasonal fluctuations and spatial variability
 - aquifer properties for each aquifer that may be affected by the proposed operations, including waste disposal and water supply, that includes hydraulic conductivity, transmissivity, storage coefficient, total porosity, effective porosity, aquifer thickness, piezometric pressures, mineralogy and chemical composition range for natural groundwaters.
 - static water levels for each aquifer including seasonal fluctuations
 - hydrogeological characteristics of confining strata, including hydraulic conductivity and thickness
 - connectivity between the proposed exploration ISR test aquifer and lateral, overlying, or underlying aquifers and surface water
 - conceptualisation of groundwater flow regime
 - a numerical model of groundwater flow dynamics, including recharge, discharge areas and processes.
- the environmental value of each aquifer present determined according to the current Environment Protection (Water Quality) Policy;
- a description of the existence, location and value of all Groundwater Dependent Ecosystems (GDEs) within the application area and within and immediately surrounding the extent of predicted hydrogeological impact of the proposed operations;
- an assessment of any current or historical use of local groundwater by the landowner(s) and other users which includes a baseline survey of bores, including water level, groundwater quality, bore construction details, status and purpose and collar/ground elevations;
- a statement describing if the application area is within an area where the water resources are prescribed under the *Landscape South Australia Act 2019*, and provide details on the current availability of water resources within the prescribed area;
- a plan, to scale, identifying the application area, all drillholes and boreholes relevant to the identification of hydrogeology, GDEs, direction of groundwater flow, any potential paleochannels and recharge zones;
- a diagram of the potentiometric groundwater elevation contours for each aquifer system that occurs within the application area and include the location of all drillholes and boreholes and supporting tabulated data used in developing the contours;
- a diagram of the location of all drillholes and boreholes used to determine the baseline groundwater quality, and supporting tabulated data and calculations used to define baseline groundwater quality and/or ranges; and
- cross-section(s) of the interpreted hydrostratigraphy showing the known and inferred groundwater levels, and groundwater flow direction, recharge and discharge mechanisms (if applicable), application area, proposed mining operations, and relevant drillholes and boreholes used in developing the cross-section(s).

3.6 Vegetation, weeds, plants and pathogens

Provide the following information when describing vegetation cover that is likely to be impacted by the proposed exploration operations:

- description of the formation and structure of vegetation in the area (e.g. woodland, shrubland, grassland);
- list of the dominant species;
- the extent to which the area is affected, or potentially affected by pathogens and weeds (e.g. *Phytophthora*; Buffel grass *Cenchrus ciliaris*); and
- the presence of significant habitats and any rare, or endangered species located, or reported to have been identified in the area; include any known sightings of rare and endangered species on a locality plan/map where possible.

3.7 Fauna

Describe the native and feral fauna that may be present in the exploration program area, noting the conservation status, in particular endangered, threatened or feral species. Include known sightings of rare and endangered species on a locality plan/map, where possible.

3.8 Environmentally sensitive locations

Identify any environmentally sensitive locations within, or close to the proposed exploration area (e.g. areas having particular ecological, built heritage, cultural, scientific, and aesthetic or conservation value (including GDE's)). Mark these on a locality plan to identify any areas of conflict so that access roads or other activities can be planned and located effectively.

This section should also detail the likely effects the proposed program may have on any identified areas of environmental sensitivity.

4. DESCRIPTION OF EXPLORATION ISR OPERATIONS (s. 70B(2)(a))

The document should provide a detailed description of proposed exploration ISR operations and any activities ancillary to exploration (e.g. drilling water bores or conducting pump tests).

The following elements must be described only to the extent that they apply to the particular proposal. If the element is not applicable, the element description may be omitted.

4.1 Equipment and personnel requirements

Describe the equipment (size, number and contractor details), number and composition of field crews (contractors, geologists, field assistants), and proposed working hours/days required to conduct the proposed program.

4.2 Detailed description of Exploration ISR operations

Provide information on the proposed operations, including:

- detailed description of each stage involved in the process;
- general description of the planned sequence and timing of test sites/stages (e.g. groundwater pre-treatment, lixiviant test, recovery);
- lixiviants used (acidic or alkali) and the recovery process;
- injection and extraction process used;
- any required initial groundwater flush or groundwater treatment; and
- estimated project commencement and completion schedules, including monitoring requirements.

4.3 Drilling, test well construction and operation

Indicate the maximum number, size and depth of drillholes/wells. Indicate site preparation methods, drilling method(s) and requirements for drilling sumps (number and size of sumps at each drillsite). State whether levelling or vegetation removal is required. If drill pad construction is required, detail the volume of material to be excavated at each site.

Provide standard design and construction details (including screened intervals) in both text and schematic form where applicable for:

- injection wells;
- extraction wells;
- liquid disposal wells;
- water supply wells; and
- compliance (monitoring) wells.

Describe any additional well construction considerations required to ensure that all wells remain inert to the leaching solution.

Describe decommissioning requirements, including the materials to be used, stratigraphic intervals where cement plugs will be placed, if the casing will be removed and when decommissioning will occur after drilling is completed.

Indicate if water affecting activity permits required for the construction of wells, have been obtained in accordance with the *Landscape South Australia Act 2019*. If not provide a statement confirming that permits/licences will be obtained prior to commencement of operations.

Notes:

- Construction and abandonment requirements for mineral drillholes must be compliant with Mineral exploration drillholes—general specifications for construction and backfilling, Earth Resources Information Sheet M21, available on the DEM Minerals website.
- Water affecting activity permits (well construction permits) must be in place prior to commencement of drilling operations.
- Drilling, construction and decommissioning of any water wells must be in accordance with the General Specification for Well Construction, Modification and Abandonment in South Australia (or any subsequent or related policy), as provided by the relevant authority.

4.4 Test well configuration

Describe in both text and schematic form, the basic configuration of test well patterns and layout (includes injection, extraction and monitoring wells), including:

- infrastructure requirements;
- criteria for and the selection of a fit for purpose monitoring array; and
- design principles that minimise the disturbance and impact on sensitive receptors (e.g. native vegetation, built heritage sites, water courses etc.) and minimises excursions of injected solutions.

4.5 Leak prevention and detection

Describe the leak prevention and detection system(s) which will enable the operator to promptly and accurately detect and control loss of liquids for all:

- wells; and
- associated connecting infrastructure.

4.6 Spill containment

Describe the spill containment or control system(s) as applicable, including bunding and leak prevention designs, for:

- wells; and
- associated connecting infrastructure.

4.7 Liquid waste

Describe the following:

- the types, composition and quantities of liquid waste generated; and
- liquid waste treatment, storage and disposal methods.

4.8 Access routes to work areas

Indicate planned access routes on a locality plan and distinguish between existing and proposed new access tracks. Detail the method for gaining access if existing tracks are not available. Indicate if vegetation clearance is required and the method to be used to clear the vegetation. Include the total area of disturbance for all new access tracks (i.e. length and width).

4.9 Campsites, storage and equipment laydown areas

Describe the layout and the number of facilities such as tents, caravans, transportables, amenities, waste disposal and management procedures (including sewage and hydrocarbon management). Indicate whether any vegetation clearance and/or earthworks are required and include the total area of disturbance (environmental footprint). For camps, include the maximum number of people that will use the site.

Show the location of laydown areas and campsites on the locality plan, where possible.

Campsites that are outside of the scope defined in the generic PEPR must use ablution facilities endorsed by the Department of Health. Confirmation of this must be included within the EPEPR.

4.10 Other exploration methods and/or ancillary activities

Describe in detail any other proposed exploration methods (e.g. seismic) and/or ancillary exploration activities, including site preparation, vegetation clearance and safety and maintenance requirements.

4.11 Water supply

Indicate the volume of water required and describe how and where water will be sourced for drilling, track maintenance and camping purposes (e.g. groundwater, surface water, mains).

4.12 Water affecting activities

Indicate if any water affecting activities other than well construction, closure and maintenance activities, will be undertaken and whether permits have been obtained. Where water affecting activity permits are required, outline site preparation, vegetation clearance and safety and maintenance requirements. For further information on water affecting activities, refer to *Landscape South Australia Act 2019*.

4.13 Management of hazardous material

Indicate if exploration activities will be conducted in areas of known uranium or thorium mineralisation and identify other hazardous materials that are likely to be encountered.

Where exploration is located within an area of known uranium or thorium mineralisation a radiation management plan endorsed by the Environment Protection Authority (SA) (EPA) must be submitted to DEM along with the EPEPR. Confirmation of EPA endorsement must also be provided with the EPEPR.

For all other hazardous material identified, provide a plan on how the materials will be managed.

4.14 Sample management

Describe the size of samples collected (including bulk sampling and water samples), collection methods, materials used when collecting the sample, sample disposal methods (including removal of sample bags) and any other sample management requirements at the exploration site (e.g. tarps or matting used to contain cuttings). Include requirements for on-site geological sample management (splitting of archive samples, bag farms, core processing and storage).

4.15 Rehabilitation strategies

Detail all activities, strategies and designs relating to the remediation of groundwater, rehabilitation of test wells and associated infrastructure.

Where active groundwater remediation is to be used as a rehabilitation strategy, detail must be provided on the proposed remediation technique to demonstrate how outcomes will ultimately be achieved.

Where natural attenuation and biodegradation of the lixiviant (or any associated by products) is to be relied on for the remediation of aquifers to achieve post exploration groundwater quality outcomes, include:

- a description of the nature and expected rates of the attenuation and biodegradation processes;
- predictions of the rate and full extent of attenuation/biodegradation supported by laboratory tests and modelling ;
- a demonstration (including laboratory evidence using host rock samples) that the predicted attenuation and biodegradation can be achieved within expected timeframes;
- a description of how the predicted attenuation/biodegradation will be validated; and
- a contingency plan if attenuation/biodegradation is not demonstrated to be occurring within expected timeframes.

Rehabilitation strategies must ensure that final remediation of surface impacts, infrastructure and groundwater is completed within 3 months after the expiry of the 12-month approval period. In regards to the retention of permitted wells, provide adequate justification as to why they should not be decommissioned.

5. MANAGEMENT OF ENVIRONMENTAL IMPACTS (r. 65(1))

The applicant is required to conduct an impact assessment to identify all of the environmental, social and economic potential impact events that are likely to occur as a result of the proposed exploration operations, how each of the identified impacts will be managed, and the level of risk remaining (residual risk) after implementing control and management strategies. Identified potential impact events should be developed based on the aspects of the environment that may be impacted on and the proposed operational details.

5.1 Assessment of environmental impacts

Identify the actual and/or credible potential impact events associated with the proposed mineral exploration program based on the environment components identified in Section 3 (includes all environmental factors, i.e. social, natural and economic) and proposed exploration activities described in Section 4.

The impact event analysis should take into account the:

- Source—the source of the potential impact event which alone, or in combination, has the potential to cause harm to an environmental receptor.
- Pathway—the potential pathway, means or route (with consideration of any natural barriers) by which an identified environmental receptor can be exposed to, or may reasonably be expected to be affected by an identified source.
- Environmental receptor—the environmental receptors that may reasonably be expected to be adversely affected by the source, taking into account considerations for the aspect of the environment (i.e. who or what could be affected).
- Impact likelihood and consequences.

- Description of uncertainty—describe any significant degree of uncertainty pertaining to the evaluation of sources, pathways and environmental receptors, including (but not limited to) lack of site specific information, limitations on modelling and quality of data. Describe any assumptions connected with the identified uncertainty.

In regards to uncertainty, so far as is relevant, identify the sensitivity to change of any assumption that has been made, including whether a change in assumption may result in a new environmental impact.

5.2 Control measures and uncertainty assessment, statement of environmental outcomes and criteria

For each impact event confirmed in Section 5.1, the information listed in Sections 5.2.1-5.2.5 below must be provided.

5.2.1 Control measures

Describe the measures proposed to manage, limit or remedy each impact event during and after the program. Demonstrate that the measures proposed are commensurate with the potential impacts, achieve compliance with other applicable statutory requirements and promote progressive rehabilitation where necessary.

The description of rehabilitation measures must demonstrate that final rehabilitation (including attenuation and biodegradation) will be completed within 3 months after the time allocated to complete the approved program.

5.2.2 Description of uncertainty

Describe any significant degree of uncertainty pertaining to the likely effectiveness of proposed control measures, including (but not limited to) the lack of site-specific information, limitations on modelling and quality of data. Describe any assumptions connected with the identified uncertainty.

So far as is relevant, identify the sensitivity to change of any assumption that has been made and assess the likelihood of an outcome not being achieved if an assumption is later found to be incorrect.

5.2.3 Risk assessment

Where a potential impact event has been identified, determine the risk after the implementation of control and management strategies. Both the likelihood and severity of the consequences of impact events must be estimated.

The risk of the potential must take into account any uncertainty pertaining to the likely effectiveness of proposed control measures.

Where risks are moderate to extreme, justify why the level of risk is acceptable, or develop additional control strategies to further lower the risk.

5.2.4 Statement of environmental outcome(s)

An outcome(s) must be developed to address each identified potential impact event.

These must describe the expected impact on the environment caused by the proposed or current exploration activities subsequent to control strategies being implemented and must meet other applicable legislative requirements.

5.2.5 Measurement criteria

Provide a draft statement of the criteria to be adopted to measure each of the proposed environmental outcomes. The draft criteria must, as far as practical, comply with Regulation 65(1)(e).

Where appropriate, recognised industry standards, codes of practice or legislative provisions from other Acts can be used as criteria.

Outcome measurement criteria must identify the following key aspects:

- what will be measured;
- how it will be measured;
- frequency of measurement.

Where attenuation is to be relied upon to demonstrate achievement of groundwater outcomes, a process must be provided for validation of predictive attenuation, including a robust groundwater monitoring plan. The attenuation process should be adequately described and include a list of the assumptions used.

6. PUBLIC RELEASE (r. 88(3)(a))

Confirm your consent to the public release of the approved EPEPR. Where consent is not provided, clearly specify with reasons each section of the EPEPR that should not be released in the public interest. Objections will be considered by the Minister (or delegate) before a determination is made on the release of the EPEPR.

Determinations allowing for the public release of a EPEPR will be made in accordance with the procedures outlined within the Guidelines for conducting mineral exploration in South Australia, Minerals Regulatory Guidelines MG22, available on the DEM Minerals website.

7. DECLARATION OF ACCURACY (r. 65(8))

The exploration proposal must include a signed (digital signatures allowed) statement by the applicant in accordance with Regulation 65(8) declaring that the content of the EPEPR has been reviewed and is accurate.

8. MAPS AND PLANS

8.1 General maps and plans

All maps and sections must conform to the following standards:

- state the relevant datum (e.g. GDA2020, GDA94, WGS84);
- use metric units;
- include a title, north arrow, scale bar, text and legend;
- state the date prepared and author;
- be of appropriate resolution and scale to show the represented information.

The exploration proposal must be accompanied by a map(s) showing the following information, where applicable:

- tenement boundaries;
- cadastral information;

- existing surface contours;
- existing vegetation;
- proposed exploration operations (includes drillholes, existing and new access tracks, drill traverses, campsites, laydown areas and other applicable information) and/or the target exploration area(s);
- existing ephemeral and permanent rivers, creeks, swamps, streams or watercourses and water management structures;
- towns, houses and homesteads, built heritage, existing roads, rails, fences, transmission lines, buildings, dams and pipelines;
- known sightings of listed species;
- location and extent of all environmentally sensitive areas;
- surface water systems;
- any relevant land use types (e.g. parks and reserves, Aboriginal freehold land, Woomera Prohibited Area).

8.2 Hydrogeological profile

Where applicable, include a series of hydrogeological cross-sections that represent the following at a project scale, as specified:

- major geological units (regional scale);
- geological units showing aquifer and confining units (tenement scale);
- aquifer systems (regional and tenement scale);
- faults and fracture systems (regional and tenement scale);
- mineralised zone (tenement scale);
- location of representative drill log sites from which geological information was obtained (regional and tenement scale); and
- location of representative monitoring bores (target aquifer) from which baseline groundwater quality information was obtained.

8.3 Aquifer potentiometric surface maps

For all aquifer systems that occur within the application area include:

- potentiometric surface contours based on measured borehole groundwater pressures;
- direction(s) of groundwater flow; and
- location of representative bores used to establish this information.

9. FORMAT AND SUBMISSION OF APPLICATIONS (r. 65(9))

Unless otherwise specified by the Director of Mines or delegate:

- an electronic version must be submitted online through the DEM website
- the electronic version must be submitted in one single Acrobat PDF file;
- Microsoft WORD compatible files must be submitted if requested by the Director of Mines (or delegate), or other authorised officers; and

If the EPEPR being submitted is a review of an approved EPEPR, provide a description or summary of all content changes made to the submitted EPEPR.

Unless an agency agreement or other document evidencing a legal authority is provided:

- the mining operator (tenement holder) must lodge all EPEPR applications;
- all correspondence regarding the proposal will be through the mining operator; and
- EPEPR approvals will be issued to the mining operator.

In accordance with Regulation 65(7) of the Mining Regulations 2011, this notice will have effect from 22 October 2020.

Dated: 15 October 2020

PRU FREEMAN
Deputy Executive Director Mineral Resources

REAL PROPERTY ACT 1886

South Australia

Real Property (Fees) Notice (No 2) 2020

under the *Real Property Act 1886*

1—Short title

This notice may be cited as the [Real Property \(Fees\) Notice \(No 2\) 2020](#).

Note—

This is a fee notice made in accordance with the [Legislation \(Fees\) Act 2019](#).

2—Revocation and Commencement

This notice revokes the Real Property (Fees) Notice 2020, as published in the Government Gazette on 7 May 2020 (p 929), and has effect on 22 October 2020.

3—Interpretation

In this notice, unless the contrary intention appears—

Act means the [Real Property Act 1886](#).

4—Fees

The fees set out in [Schedule 1](#) are prescribed for the purposes of the Act and are payable to the Registrar-General.

Schedule 1—Fees

1	For the registration or entry of each instrument (irrespective of the number of folios to be endorsed)—other than any registration or entry specifically provided for	\$173.00
2	For the registration of an instrument registering a mortgage and changing name of mortgagor(s)	\$332.00
3	For registering a transfer—	
	(a) where the consideration, or the capital value of the land, (whichever is the greater)—	
	(i) does not exceed \$5 000	\$173.00
	(ii) does not exceed \$20 000	\$193.00
	(iii) does not exceed \$40 000	\$212.00
	(iv) exceeds \$40 000	\$298.00
	plus \$88.00 for every \$10 000 (or part of \$10 000) above \$50 000	

	(b) where the Commissioner of State Taxation has adjudged the transfer to be exempt from stamp duty or where no <i>ad valorem</i> stamp duty is payable (other than in respect of land that is qualifying land under section 105A of the Stamp Duties Act 1923)	\$173.00
	(c) that has been assessed pursuant to section 71CA, 71CB, 71CBA or 71CC of the Stamp Duties Act 1923	\$173.00
4	On lodgment of a caveat under sections 39, 80F or 223D of the Act	\$173.00
5	On lodgment of a priority notice under section 154A of the Act	\$22.80
6	On lodgment of an application to extend the duration of a priority notice under section 154G of the Act	\$11.30
7	On lodgment of notice of withdrawal of a priority notice under section 154E of the Act	no fee
8	For a search of the details of a priority notice	no fee
9	For the deposit, or noting the revocation, of a duplicate or attested copy of a power of attorney	\$173.00
10	For the registration of an application to note a change of address	no fee
11	For entry of a foreclosure order (exclusive of the cost of advertising in the Gazette)	\$289.00
12	For a certified copy of—	
	(a) a certificate of title under section 51A of the Act	\$34.50
	(b) a statement under section 51D of the Act	\$34.50
13	Unless otherwise specified—	
	(a) (except where paragraph (b) applies) for the issue of a new certificate of title	\$93.50
	(b) for the issue of a new certificate of title on the amalgamation of allotments wholly within the Mount Lofty Catchment Area	no fee
14	For the issue of a certificate of title—	
	(a) (limited or ordinary) on the land first being brought under the Act	no fee
	(b) to a corporation or district council for a road, street or reserve	no fee
	(c) to effect correction or amendment of title or for the convenience of the Lands Titles Registration Office in effecting registration or redesignation	no fee
15	For an application for the division of land—	
	(a) where deposit of the plan of division will not vest an estate or interest in land (except a street, road, thoroughfare, reserve or other similar open space that vests in a council or other authority or reverts to the Crown or an easement that will vest in an authority or entity in accordance with section 223LG of the Act) in any person	\$173.00
	(b) in all other cases	\$430.00

Note—

Fees for the examination of the plan of division, deposit or acceptance for filing of the plan and for the issue of new certificates of title are payable under this Schedule in addition to this amount.

- | | | |
|----|--|----------|
| 16 | For an application for the amalgamation of allotments— | |
| | (a) for the amalgamation of allotments that are wholly within the Mount Lofty Catchment Area | no fee |
| | (b) for any other amalgamation of allotments | \$173.00 |

Note—

Fees for the examination of the plan of amalgamation, deposit or acceptance for filing of the plan and for the issue of new certificates of title are payable under this Schedule in addition to this amount.

- | | | |
|----|---|------------|
| 17 | For the deposit or acceptance for filing by the Registrar-General— | |
| | (a) of a plan of amalgamation of allotments wholly within the Mount Lofty Catchment Area | no fee |
| | (b) of any other plan | \$158.00 |
| 18 | Unless otherwise specified, for the examination— | |
| | (a) of a plan of survey certified correct by a licensed surveyor and lodged with or submitted to the Registrar-General (for freehold or Crown land)—
plus a further \$516, payable by the surveyor, if the plan is relodged or resubmitted following rejection by the Registrar-General (however, the Registrar-General may waive or reduce the further fee if the Registrar-General considers that appropriate in a particular case having regard to the work involved in examining the relodged or resubmitted plan) | \$1,030.00 |
| | (b) of an uncertified data plan (except a plan of a kind referred to in paragraph (c)) lodged with or submitted to the Registrar-General (for freehold or Crown land) | \$516.00 |
| | (c) of an uncertified data plan lodged with or submitted to the Registrar-General for the amalgamation of allotments wholly within the Mount Lofty Catchment Area | no fee |
| | (d) of a plan lodged with or submitted to the Registrar-General for the purposes of a lease of part of an allotment | \$208.00 |
| 19 | For the examination— | |
| | (a) of a plan of survey certified correct by a licensed surveyor and lodged with the Registrar-General for information purposes only | no fee |
| | (b) of an uncertified data plan lodged with the Registrar-General for information purposes only | no fee |
| | (c) of a plan of survey certified by a licensed surveyor and lodged with the Registrar-General by the Surveyor-General | no fee |
| | (d) of plans submitted under the <i>Roads (Opening and Closing) Act 1991</i> | no fee |
| 20 | Unless otherwise specified, for the deposit or acceptance for filing of any plan (for freehold or Crown land) | \$158.00 |
| 21 | For the deposit or acceptance for filing of a plan prepared by the Registrar-General or under the Registrar-General's authorisation | no fee |
| 22 | For the withdrawal of any instrument, application or plan submitted for registration, deposit or acceptance for filing | \$68.00 |

23	For the withdrawal of any plan of survey certified correct by a licensed surveyor and lodged with or submitted to the Registrar-General for examination	\$140.00
24	For an application under section 146 of the Act (exclusive of the cost of registration of the instrument of discharge)	\$228.00
25	For searching the Register Book—	
	(a) comprising a search statement from the Registrar-General's unregistered document system, a copy of the certificate of title, a check search and a historical search of the certificate of title	\$30.75
	(b) comprising a search of the electronic records of the certificate of title, the Registrar-General's unregistered document system, a check search and a historical search of the certificate of title, including access to the relevant plan image and all registered instruments and dealings recorded on that certificate of title	\$37.25
26	For a copy—	
	(a) of a registered instrument	\$11.30
	(b) of a plan deposited or accepted for filing by the Registrar-General	\$12.20
	(c) of a cancelled certificate of title	no fee
	(d) of any instrument, entry, document or record not otherwise specifically provided for	\$11.30
27	For requesting any of the following under the South Australian Integrated Land Information System (<i>SAILIS</i>):	
	(a) a check search of a specified certificate of title	no fee
	(b) the details of a specified document	no fee
	(c) the location of a specified document or plan	no fee
	(d) the details of a specified plan	no fee
	(e) a list of the numbers assigned to plans lodged in respect of a specified Section of land in a Hundred	no fee
	(f) the details of the delivery of a specified item	no fee
	(g) the details of the delivery of documents relating to—	
	(i) a specified agent code	no fee
	(ii) a specified delivery slip	no fee
	(h) the details of a specified agent code	no fee
	(i) in respect of a specified document—a search of—	
	(i) the series in which the document was lodged; and	no fee
	(ii) any other series into which the document may, subsequently, have been moved, prior to registration of the document	no fee
	(j) a search of the location of, and the numbers assigned to, documents lodged in a specified series	no fee
	(k) a record of all documents lodged or registered under a specified name	no fee
	(l) a historical search of a specified certificate of title	\$2.50

28	For advertising in the Gazette—	
	(a) an application for a foreclosure	no fee
	(b) an application under Part 4 of the Act	no fee
	(c) an application under Part 7A of the Act	no fee
29	For reporting to a local government authority—	
	(a) a change of ownership of land (for each change of ownership reported)	\$2.40
	(b) a converted certificate of title (for each converted certificate of title reported)	\$2.40
	(c) on the subdivision of land—details of—	\$2.40
	(i) cancelled certificates of title; and	
	(ii) newly created parcels of land and new certificates of title issued in respect of those parcels; and	
	(iii) the valuation assessment for each new certificate of title issued,	
	(for each valuation assessment reported)	
30	For reporting to the South Australian Water Corporation—	
	(a) a change of ownership of land (for each change of ownership reported)	\$2.40
	(b) on the subdivision of land—details of—	\$2.40
	(i) cancelled certificates of title; and	
	(ii) newly created parcels and new certificates of title issued in respect of those parcels,	
	(for each new certificate of title reported)	
31	For providing miscellaneous reports of changes of ownership of land to government agencies (other than the South Australian Water Corporation)	no fee
32	For providing reports of Heritage Agreements to the administrative unit of the Public Service that is, under a Minister, responsible for the administration of the Heritage Places Act 1993	no fee
33	For reporting to SA Power Networks a change of ownership of land (plus an additional fee of \$5.15 for each change of ownership reported)	\$36.75
34	For a copy of any of the following documents under the Bills of Sale Act 1886 :	
	(a) a document filed under section 11A of the Bills of Sale Act 1886	\$11.30
	(b) a registered bill of sale or a discharge, extension or renewal of a bill of sale	\$11.30
	(c) any other document	\$11.30
35	For a copy of a plan under the Strata Titles Act 1988 (including provision of the unit entitlement sheet)	\$12.20
36	For a copy of a plan under the Community Titles Act 1996 (including provision of the lot entitlement sheet)	\$12.20

37	For providing a lodgement support service suite in respect of electronic lodgement (known as LSS 1) consisting of—	\$15.60
	(a) supply of title data for completion of electronic document forms	
	(a) unlimited title activity checks	
	(a) unlimited lodgement verifications for lodgements which reference title	
38	For providing a lodgement support service suite in respect of electronic lodgement (known as LSS 2) consisting of—	\$12.20
	(a) supply of title data for completion of electronic document forms	
	(a) unlimited lodgement verifications, for lodgements which reference title	
39	For providing a lodgement support service suite in respect of electronic lodgement (known as LSS3) consisting of the resupply of title data for electronic documents forms if original data for the title has already been supplied	no fee

Made by the Attorney-General

On 20 October 2020

ROADS (OPENING AND CLOSING) ACT 1991

SECTION 24

Notice of Confirmation of Road Process Order Road Closure—Dening Street, Robe

BY Road Process Order made on 3 September 2020, The District Council of Robe ordered that:

1. Portion of Dening Street, Robe, situated adjoining the northern boundary of Allotment 10 in Deposited Plan 67101, Hundred of Waterhouse, more particularly delineated and lettered 'A' in Preliminary Plan 20/0023 be closed.
2. The whole of the land subject to closure be retained by The District Council of Robe in accordance with the Application for Document of Title dated 3 September 2020.
3. The following easement is to be granted over the whole of the land subject to closure:

Grant to the South Australian Water Corporation an easement for water supply purposes over the land marked 'A' in Deposited Plan 124991.

On 20 October 2020 that order was confirmed by the Attorney-General conditionally upon the deposit by the Registrar-General of Deposited Plan 124991 being the authority for the new boundaries.

Pursuant to section 24 of the Roads (Opening and Closing) Act 1991, NOTICE of the order referred to above and its confirmation is hereby given.

Dated: 22 October 2020

M. P. BURDETT
Surveyor-General

DPTI: 2020/11236/01

ROADS (OPENING AND CLOSING) ACT 1991

SECTION 24

Notice of Confirmation of Road Process Order Road Closure—Rarkang Road, Deep Creek

BY Road Process Order made on 28 May 2020, The District Council of Yankalilla ordered that:

1. Portions of Rarkang Road, Deep Creek, situated adjoining Allotment 23 in Deposited Plan 14001 and Allotment 14 in Filed Plan 40092, Hundred of Waitpinga, more particularly delineated and lettered 'A' and 'B' in Preliminary Plan 20/0009 be closed.
2. Transfer the whole of the land subject to closure to Ralgnal Pty Ltd (ACN: 007 891 821) in accordance with the Agreement for Transfer dated 11 June 2020 entered into between The District Council of Yankalilla and Ralgnal Pty Ltd (ACN: 007 891 821).

On 20 October 2020 that order was confirmed by the Attorney-General conditionally upon the deposit by the Registrar-General of Deposited Plan 124248 being the authority for the new boundaries.

Pursuant to section 24 of the Roads (Opening and Closing) Act 1991, NOTICE of the Order referred to above and its confirmation is hereby given.

Dated: 22 October 2020

M. P. BURDETT
Surveyor-General

DPTI: 2020/05593/01

TRANSPLANTATION AND ANATOMY ACT 1983

SECTIONS 6 AND 24

Instrument of Appointment

I, HON STEPHEN WADE MLC, MINISTER FOR HEALTH AND WELLBEING, hereby:

1. Revoke all previous appointments made pursuant to section 6 of the *Transplantation and Anatomy Act 1983* (“the TA Act”); and
2. Pursuant to section 6 of the TA Act, appoint the Medical Practitioners listed Column 1 of Schedule 1, from the medical specialty described in Column 2 of Schedule 1, as Designated Officers for the hospital or hospitals specified in Column 3 of Schedule 1; and
3. Revoke all previous appointments made pursuant to section 24 of the TA Act; and
4. Pursuant to section 24 of the TA Act, appoint the persons named in Column 1 of Schedule 2, with the corresponding position described in Column 2 of Schedule 2, as Authorised Persons for the State of South Australia.

These revocations and appointments operate from the date of signing of this instrument.

The Minister for Health and Wellbeing may vary or revoke these appointments at any time.

Dated: 20 October 2020

STEPHEN WADE
Minister for Health and Wellbeing

SCHEDULE 1

SCHEDULE 1 OF INSTRUMENT OF APPOINTMENT BY THE MINISTER FOR HEALTH AND WELLBEING PURSUANT TO SECTION 6
TRANSPLANTATION AND ANATOMY ACT 1983

List of Designated Officers

Column 1	Column 2	Column 3
MEDICAL PRACTITIONER	MEDICAL SPECIALTY	HOSPITAL OR HOSPITALS
Prof Andrew David Bersten	Intensive Care Med	BHFLHN; CALHN; EFNLHN; FUNLHN; NALHN; RMCLHN; SALHN; SELHN; WCHN; and YNLHN Ashford Private Hospital; Flinders Private Hospital
Dr Shailesh Bihari	Intensive Care Med	BHFLHN; CALHN; EFNLHN; FUNLHN; NALHN; RMCLHN; SALHN; SELHN; WCHN; and YNLHN
Dr Drago Bratkovic	Paediatrics, Metabolic	BHFLHN; CALHN; EFNLHN; FUNLHN; NALHN; RMCLHN; SALHN; SELHN; WCHN; and YNLHN
Dr Rebecca Cooksey	Paediatrics, Surgery	BHFLHN; CALHN; EFNLHN; FUNLHN; NALHN; RMCLHN; SALHN; SELHN; WCHN; and YNLHN
Dr David Durham	Intensive Care Med	BHFLHN; CALHN; EFNLHN; FUNLHN; NALHN; RMCLHN; SALHN; SELHN; WCHN; and YNLHN
Dr Evan Everest	Intensive Care Med	BHFLHN; CALHN; EFNLHN; FUNLHN; NALHN; RMCLHN; SALHN; SELHN; WCHN; and YNLHN
Dr Mark Finnis	Crit Care Consult	Memorial Private Hospital
Dr Roy Fischer	Intensive Care Med	BHFLHN; CALHN; EFNLHN; FUNLHN; NALHN; RMCLHN; SALHN; SELHN; WCHN; and YNLHN
Dr Rob Fitridge	Vascular Surgery	BHFLHN; CALHN; EFNLHN; FUNLHN; NALHN; RMCLHN; SALHN; SELHN; WCHN; and YNLHN
Dr Janice Fletcher	Paediatrics, Genetics	BHFLHN; CALHN; EFNLHN; FUNLHN; NALHN; RMCLHN; SALHN; SELHN; WCHN; and YNLHN
Dr Steven Galluccio	Intensive Care Med	BHFLHN; CALHN; EFNLHN; FUNLHN; NALHN; RMCLHN; SALHN; SELHN; WCHN; and YNLHN
Dr Thiruvankatam Govindan	Emergency Med	BHFLHN; CALHN; EFNLHN; FUNLHN; NALHN; RMCLHN; SALHN; SELHN; WCHN; and YNLHN
Dr Simon Hockley	Intensivist	Calvary Wakefield Private Hospital
Dr Andrew W Holt	Intensive Care Med	BHFLHN; CALHN; EFNLHN; FUNLHN; NALHN; RMCLHN; SALHN; SELHN; WCHN; and YNLHN Ashford Private Hospital; Flinders Private Hospital
Dr Tim Hunt	Anaesthesia	BHFLHN; CALHN; EFNLHN; FUNLHN; NALHN; RMCLHN; SALHN; SELHN; WCHN; and YNLHN
Dr Jayanthi Jayakaran	Medical Admin	BHFLHN; CALHN; EFNLHN; FUNLHN; NALHN; RMCLHN; SALHN; SELHN; WCHN; and YNLHN
Dr David Ketteridge	Paediatrics	BHFLHN; CALHN; EFNLHN; FUNLHN; NALHN; RMCLHN; SALHN; SELHN; WCHN; and YNLHN
Dr Maria Kirby	Paediatrics, Oncology	BHFLHN; CALHN; EFNLHN; FUNLHN; NALHN; RMCLHN; SALHN; SELHN; WCHN; and YNLHN
Dr Steve Lam	Intensive Care Med	BHFLHN; CALHN; EFNLHN; FUNLHN; NALHN; RMCLHN; SALHN; SELHN; WCHN; and YNLHN

Column 1	Column 2	Column 3
MEDICAL PRACTITIONER	MEDICAL SPECIALTY	HOSPITAL OR HOSPITALS
Dr Russell Laver	Intensive Care Med	BHFLHN; CALHN; EFNLHN; FUNLHN; NALHN; RMCLHN; SALHN; SELHN; WCHN; and YNLHN
Dr Rebecca Linke	Radiology, Paediatrics	BHFLHN; CALHN; EFNLHN; FUNLHN; NALHN; RMCLHN; SALHN; SELHN; WCHN; and YNLHN
Dr Nes Lian Lloyd	Medical Admin	BHFLHN; CALHN; EFNLHN; FUNLHN; NALHN; RMCLHN; SALHN; SELHN; WCHN; and YNLHN
Dr Dee McCormack	Obstetrician	BHFLHN; CALHN; EFNLHN; FUNLHN; NALHN; RMCLHN; SALHN; SELHN; WCHN; and YNLHN
Dr Susan Merrett	Medical Admin	BHFLHN; CALHN; EFNLHN; FUNLHN; NALHN; RMCLHN; SALHN; SELHN; WCHN; and YNLHN
Dr Rodney Mitchell	Anaesthesia	BHFLHN; CALHN; EFNLHN; FUNLHN; NALHN; RMCLHN; SALHN; SELHN; WCHN; and YNLHN
Dr Mark Morton	General Medicine	BHFLHN; CALHN; EFNLHN; FUNLHN; NALHN; RMCLHN; SALHN; SELHN; WCHN; and YNLHN
Dr Gerry O'Callaghan	Intensive Care Med	BHFLHN; CALHN; EFNLHN; FUNLHN; NALHN; RMCLHN; SALHN; SELHN; WCHN; and YNLHN
Dr Michael Osborn	Paediatrics, Oncology	BHFLHN; CALHN; EFNLHN; FUNLHN; NALHN; RMCLHN; SALHN; SELHN; WCHN; and YNLHN
Dr Lawrie Palmer	Palliative Medicine	BHFLHN; CALHN; EFNLHN; FUNLHN; NALHN; RMCLHN; SALHN; SELHN; WCHN; and YNLHN
Dr Cynthia Papendick	Emergency Med	BHFLHN; CALHN; EFNLHN; FUNLHN; NALHN; RMCLHN; SALHN; SELHN; WCHN; and YNLHN
Dr Alpesh Patel	Intensive Care Med	BHFLHN; CALHN; EFNLHN; FUNLHN; NALHN; RMCLHN; SALHN; SELHN; WCHN; and YNLHN
Dr Andrew Pearce	Emergency Med	BHFLHN; CALHN; EFNLHN; FUNLHN; NALHN; RMCLHN; SALHN; SELHN; WCHN; and YNLHN
Dr Nicola Poplawski	Genetics	BHFLHN; CALHN; EFNLHN; FUNLHN; NALHN; RMCLHN; SALHN; SELHN; WCHN; and YNLHN
Dr Shivesh Prakash	Intensive Care Med	BHFLHN; CALHN; EFNLHN; FUNLHN; NALHN; RMCLHN; SALHN; SELHN; WCHN; and YNLHN
Dr Rajaram Ramadoss	Intensivist	BHFLHN; CALHN; EFNLHN; FUNLHN; NALHN; RMCLHN; SALHN; SELHN; WCHN; and YNLHN
Dr Tharapriya Ramkumar	Anaesthesia	BHFLHN; CALHN; EFNLHN; FUNLHN; NALHN; RMCLHN; SALHN; SELHN; WCHN; and YNLHN
Dr Brett Ritchie	Pathology, Microbiology	BHFLHN; CALHN; EFNLHN; FUNLHN; NALHN; RMCLHN; SALHN; SELHN; WCHN; and YNLHN
Dr Brett Sampson *exclude Organ Donation	Intensive Care Med	BHFLHN; CALHN; EFNLHN; FUNLHN; NALHN; RMCLHN; SALHN; SELHN; WCHN; and YNLHN
Dr Julianne Schliebs	Emergency Department	BHFLHN; CALHN; EFNLHN; FUNLHN; NALHN; RMCLHN; SALHN; SELHN; WCHN; and YNLHN
Dr Sharon Semmler	Emergency Department	BHFLHN; CALHN; EFNLHN; FUNLHN; NALHN; RMCLHN; SALHN; SELHN; WCHN; and YNLHN
Dr Clayton Sibbin	Intensive Care Med	BHFLHN; CALHN; EFNLHN; FUNLHN; NALHN; RMCLHN; SALHN; SELHN; WCHN; and YNLHN
Dr Nick Smith	Paediatrics, Neurology	BHFLHN; CALHN; EFNLHN; FUNLHN; NALHN; RMCLHN; SALHN; SELHN; WCHN; and YNLHN
Dr Ram Suppiah	Haematology, Oncology	BHFLHN; CALHN; EFNLHN; FUNLHN; NALHN; RMCLHN; SALHN; SELHN; WCHN; and YNLHN
Dr Heather Tapp	Haematology, Oncology	BHFLHN; CALHN; EFNLHN; FUNLHN; NALHN; RMCLHN; SALHN; SELHN; WCHN; and YNLHN
A/Prof Anthony C Thomas	Pathology	BHFLHN; CALHN; EFNLHN; FUNLHN; NALHN; RMCLHN; SALHN; SELHN; WCHN; and YNLHN
Dr Roelof Van Wijk	Anaesthesia	BHFLHN; CALHN; EFNLHN; FUNLHN; NALHN; RMCLHN; SALHN; SELHN; WCHN; and YNLHN
Dr Nan Vasilunas	Pathology, Microbiology	BHFLHN; CALHN; EFNLHN; FUNLHN; NALHN; RMCLHN; SALHN; SELHN; WCHN; and YNLHN
Dr Santosh Verghese	Intensive Care Med	BHFLHN; CALHN; EFNLHN; FUNLHN; NALHN; RMCLHN; SALHN; SELHN; WCHN; and YNLHN
Dr Jack Wearne	Emergency Med	BHFLHN; CALHN; EFNLHN; FUNLHN; NALHN; RMCLHN; SALHN; SELHN; WCHN; and YNLHN

Column 1	Column 2	Column 3
MEDICAL PRACTITIONER	MEDICAL SPECIALTY	HOSPITAL OR HOSPITALS
Dr Ubbo Wiersema	Intensive Care Med	BHFLHN; CALHN; EFNLHN; FUNLHN; NALHN; RMCLHN; SALHN; SELHN; WCHN; and YNLHN
Dr Anthony Wong	Medical Admin	BHFLHN; CALHN; EFNLHN; FUNLHN; NALHN; RMCLHN; SALHN; SELHN; WCHN; and YNLHN
Dr Michael Yung	Paediatrics	BHFLHN; CALHN; EFNLHN; FUNLHN; NALHN; RMCLHN; SALHN; SELHN; WCHN; and YNLHN

Glossary

BHFLHN	Barossa Hills Fleurieu Local Health Network Incorporate
CALHN	Central Adelaide Local Health Network Incorporated
EFNLHN	Eyre and Far North Local Health Network Incorporated
FUNLHN	Flinders and Upper North Local Health Network Incorporated
NALHN	Northern Adelaide Local Health Network Incorporated
RMCLHN	Riverland Mallee Coorong Local Health Network Incorporated
SALHN	Southern Adelaide Local Health Network Incorporated
SELHN	South East Local Health Network Incorporated
WCHN	Women's and Children's Health Network Incorporated
YNLHN	Yorke and Northern Local Health Network Incorporated

SCHEDULE 2

SCHEDULE 2 OF INSTRUMENT OF APPOINTMENT BY THE MINISTER FOR HEALTH PURSUANT TO SECTION 24
TRANSPLANTATION AND ANATOMY ACT 1983 (SA)

List of Authorised Persons for the State of South Australia

Column 1	Column 2	Column 3
NAME	POSITION	COVERAGE
Ms Tamme Golding-Holbrook	Manager, Eye Bank of South Australia, Department of Ophthalmology	State of South Australia
Ms Cecily Lawson	Assistant Eye Bank Operations Officer, Eye Bank of South Australia, Department of Ophthalmology	State of South Australia
Mr Luke Weinel	Coordinator, Eye Bank of South Australia, Department of Ophthalmology	State of South Australia
Ms Nicole Leonardis	Coordinator, Eye Bank of South Australia, Department of Ophthalmology	State of South Australia

LOCAL GOVERNMENT INSTRUMENTS

CITY OF MITCHAM

SUPPLEMENTARY ELECTION OF COUNCILLOR FOR GAULT WARD

Election Results

Conducted on Tuesday 13 October 2020

Formal Ballot Papers—1928

Informal Ballot Papers—3

Quota—965

Candidates	First Preference Votes	Elected/Excluded	Votes at Election/Exclusion	Count
SCOTT, Janet	260	Excluded	275	5
TREWARTHA, Ali	97	Excluded	97	2
GRIFFIN, Mark Anthony	262	Excluded	334	9
WESTBROOK, Ashley	343		664	24
CHENEY, Coralie	391	Elected	720	24
WELLS, Joanna	447	Excluded	518	17
KING, Jack	128	Excluded	135	3

Dated: 22 October 2020

MICK SHERRY
Returning Officer

CITY OF PORT ADELAIDE ENFIELD

LOCAL GOVERNMENT ACT 1999

Adoption of Community Land Management Plans—Coastal Reserves, Beaches (Land Under Care Control and Management of Council Pursuant to the Harbors and Navigation Act 1993), and Commercial Property

Notice is hereby given pursuant to section 197(3) of the *Local Government Act 1999* that the City of Port Adelaide Enfield at its ordinary Council meeting of 13 October 2020 resolved to adopt Community Land Management Plans for *Coastal Reserves, Beaches (Land Under Care Control and Management of Council Pursuant to the Harbors and Navigation Act 1993)* and *Commercial Property*. The previous Community Land Management Plan for Commercial Property (amended 14 June 2005) has been revoked.

The adopted Community Land Management Plans are available for public viewing on the Council's website: www.cityofpae.sa.gov.au.

Dated: 22 October 2020

MARK WITHERS
Chief Executive Officer

ALEXANDRINA COUNCIL

Review of Elector Representation

Notice is hereby given that Alexandrina Council is undertaking a review to determine whether a change of arrangements are required in respect to elector representation, so as to ensure that the electors of the area being adequately and fairly represented.

Pursuant to the provisions of Section 12(7) of the *Local Government Act 1999*, notice is hereby given that Council has prepared a Representation Options Paper which examines the advantages and disadvantages of the various options available in regards to the composition and structure of Council, and the division of the council area into wards.

A copy of the Representation Options Paper is available on the Council's website (www.alexandrina.sa.gov.au); and for inspection and/or purchase at the Council offices at 11 Cadell Street, Goolwa and/or 1 Colman Terrace, Strathalbyn.

Written submissions are invited from interested persons from Wednesday 21st October 2020 and should be directed to the Chief Executive Officer, PO Box 21, Goolwa 5214 or emailed to alex@alexandrina.sa.gov.au by close of business on Friday, 4 December 2020. Alternatively, electronic submissions can be made via the "My Say" Alexandrina or Council websites.

Information regarding the elector representation review can be obtained by contacting the Group Manager Leadership on telephone 8555 7000 or by email at alex@alexandrina.sa.gov.au.

Dated: 22 October 2020

GLENN RAPPENBERG
Chief Executive Officer

LIGHT REGIONAL COUNCIL

LOCAL GOVERNMENT ACT 1999: SECTION 219(1)

Road Name Change—Un-made portion of Power Street, Freeling

Notice is hereby given that Light Regional Council at its meeting on 23 June 2020, pursuant to Section 219(1) of the *Local Government Act 1999*, resolved to change the name of a portion of Power Street to Schuster Street, Freeling, being the un-made portion of Power Street situated between Allotment 300 in Deposited Plan 114659 and Piece 91 in Filed Plan 215246, and located to the west of the closed road in Deposited Plan 124693.

Dated: 19 October 2020

BRIAN CARR
Chief Executive Officer

DISTRICT COUNCIL OF ROBE

Representation Review

Notice is hereby given that the District Council of Robe has undertaken a review to determine whether alterations are required in respect to elector representation, including ward boundaries and the composition of the Council.

Representation Review Report

Pursuant to Section 12(8a) of the *Local Government Act 1999* the Council has prepared a Representation Review Report which details the review process, public consultation undertaken and a proposal for the Council's elected representation that it considers could be carried into effect. A copy of this Report is available:

- during office hours, at the Council Office, 3 Royal Circus, Robe SA 5276 and the Council Library & Visitor Information Centre, 1 Mundy Terrace, Robe SA 5276;
- on the Council's website www.robe.sa.gov.au; or
- by contacting Natalie Ellis on (08) 8768 2003 or by email nat@robe.sa.gov.au.

Written Submissions

Written submissions are invited from interested persons from Thursday, 22 October 2020 and must be received by 5pm on Friday, 13 November 2020. Written submissions should be addressed to:

Representation Review
District Council of Robe
Via mail to: PO Box 1, Robe SA 5276
Via email to: council@robe.sa.gov.au
In person: Council Office, 3 Royal Circus, Robe SA 5276

Any person(s) making a written submission will be invited to appear before a meeting of the Council or Council committee to be heard in respect of their submission.

Further information regarding the Representation Review can be obtained by contacting Natalie Ellis on (08) 8768 2003 or email nat@robe.sa.gov.au.

Dated: 22 October 2020

JAMES HOLYMAN
Chief Executive Officer

PUBLIC NOTICES

TRUSTEE ACT 1936

PUBLIC TRUSTEE

Estates of Deceased Persons

In the matter of the estates of the undermentioned deceased persons:

BARBARY Lesley Lillian late of 14-24 King William Road Wayville of no occupation who died 11 July 2020
BROWN Andrew Bensted late of 20 Isaacs Avenue Yackandandah Victoria Retired Telephone Technician who died 12 January 2020
COMMONS Heather Eileen late of 15 Halliday Street Risdon Park of no occupation who died 21 March 2020
FETTKE Victor Ronald late of 6 Ellis Street Enfield of no occupation who died 13 May 2020
FLAVEL David William late of 1-7 Cumnock Street Jamestown of no occupation who died 11 June 2020
JANUSAITIS Joyleen Marie late of 150 Adams Road Craigmore of no occupation who died 25 February 2020
LINDSAY Iris Beatrice Victoria late of 87 Hall Street Semaphore of no occupation who died 14 August 2013
MOYLE Glenelg Francis late of 20 Melinda Road Hackham Retired Maintenance Worker who died 21 October 2019
TJUKANGKU Whiskey aka WHISKEY Tjukangku late of 89 Hospital Road Coober Pedy of no occupation who died 05 February 2015
WEAR Gloria Nellie late of 18 Trafford Street Angle Park of no occupation who died 14 July 2020

Notice is hereby given pursuant to the Trustee Act 1936, the Inheritance (Family Provision) Act 1972 and the Family Relationships Act 1975 that all creditors, beneficiaries, and other persons having claims against the said estates are required to send, in writing, to the office of Public Trustee at GPO Box 1338, Adelaide, 5001, full particulars and proof of such claims, on or before the 20 November 2020 otherwise they will be excluded from the distribution of the said estate; and notice is also hereby given that all persons indebted to the said estates are required to pay the amount of their debts to the Public Trustee or proceedings will be taken for the recovery thereof; and all persons having any property belonging to the said estates are forthwith to deliver same to the Public Trustee.

Dated: 22 October 2020

N. S. RANTANEN
Public Trustee

NATIONAL ENERGY RETAIL LAW

Initiation of Review

The Australian Energy Market Commission (AEMC) gives notice under the National Energy Retail Law as follows:

Under s 230, the AEMC gives notice that the Ministerial Council on Energy has directed it to conduct the *Review of the retailer of last resort scheme* (Ref. RPR0015). The review relates to considering changes to the retailer of last resort (ROLR) scheme following recommendations in the 2020 Retail Energy Competition Review and providing advice on other ROLR issues that warrant consideration. The terms of reference for the review are available on the AEMC website.

Documents referred to above are available on the AEMC's website and are available for inspection at the AEMC's office.

Australian Energy Market Commission
Level 15, 60 Castlereagh St
Sydney NSW 2000
Telephone: (02) 8296 7800
www.aemc.gov.au

Dated: 22 October 2020

NATIONAL GAS LAW

Initiation of Non-controversial Rule Change

The Australian Energy Market Commission (AEMC) gives notice under the National Gas Law as follows:

Under s 303, the Australian Energy Market Operator (AEMO) has requested the *DWGM maintenance planning* (Ref. GRC0058) proposal. The proposal seeks to clarify AEMO's existing maintenance coordination function and eliminate inconsistencies between the National Gas Law (NGL) and Part 19 of the National Gas Rules (NGR), which applies to the Victorian Declared Wholesale Gas Market (Victorian DWGM). The AEMC intends to expedite the proposal under s 304 as it considers the proposed Rule is non-controversial, subject to requests not to do so. Written requests not to expedite the proposal must be received by **5 November 2020**. Submissions must be received by **19 November 2020**.

Submissions can be made via the AEMC's website. Before making a submission, please review the AEMC's privacy statement on its website. Submissions should be made in accordance with the AEMC's *Guidelines for making written submissions on Rule change proposals*. The AEMC publishes all submissions on its website, subject to confidentiality.

Written requests should be sent to submissions@aemc.gov.au and cite the reference in the title. Before sending a request, please review the AEMC's privacy statement on its website.

Documents referred to above are available on the AEMC's website and are available for inspection at the AEMC's office.

Australian Energy Market Commission
Level 15, 60 Castlereagh St
Sydney NSW 2000
Telephone: (02) 8296 7800
www.aemc.gov.au

Dated: 22 October 2020

NOTICE SUBMISSION

The South Australian Government Gazette is compiled and published each Thursday.

Notices must be submitted before 4 p.m. Tuesday, the week of intended publication.

All submissions are formatted per the gazette style and proofs are supplied as soon as possible. Alterations must be returned before 4 p.m. Wednesday.

Requests to withdraw submitted notices must be received before 10 a.m. on the day of publication.

Gazette notices should be emailed as Word files in the following format:

- Title—name of the governing Act/Regulation
- Subtitle—brief description of the notice
- A structured body of text
- Date of authorisation
- Name, position, and government department/organisation of the person authorising the notice

Please provide the following information in your email:

- Date of intended publication
- Contact details of at least two people responsible for the notice content
- Name of the person and organisation to be charged for the publication (Local Council and Public notices)
- Request for a quote, if required
- Purchase order, if required

EMAIL: governmentgazettesa@sa.gov.au

PHONE: (08) 7109 7760

WEBSITE: www.governmentgazette.sa.gov.au

All instruments appearing in this gazette are to be considered official, and obeyed as such